



April 17-20, 2019

Shakespeare Association of America
47th Annual Meeting
Renaissance Hotel · Washington, D.C.



Conference Highlights



Plenary session:
**Looking Forward:
New Directions in
Early Modern Race Studies**

Ira Aldridge as Othello
(by William Mulready, Walters Art Museum)

p. 30



**Edmund Kean
as Richard III**

Performance
by Ian Hughes

p. 30



THE UNIVERSITY OF
MISSISSIPPI

The University of Mississippi is proud to sponsor the Shakespeare Association of America.

PROLOGUE:

From the Executive Director

Welcome to the 47th Annual Meeting of the SAA! We are thrilled to have an unusually large and diverse group of attendees this year and trust that the meeting will be the more exciting as a result. If you are a returning member, you'll find the look of the program has changed a bit, thanks to the design talents of the University of Mississippi's printing services, and we've changed a few other things about the schedule to highlight the interconnections between our plenary and our Scholars of Color Social, which are now back-to-back events. If you are new to the SAA, our goal is to make your experience as positive as we can, so look for the neon green lanyards identifying the SAAllies who have volunteered to be available to all new members: they are looking forward to answering your questions, introducing you to colleagues, or just spending some time getting to know you.



As always, our program features a number of supplemental events—workshops, film screenings, interviews and performances—for your edification and entertainment, many of which I hope you will attend.

Finally, our members are the innovators who can ensure a bright future for our organization and the field of study it supports, so please consider attending the Wednesday Town Hall, where SAA's officers will update you on their work and where you can offer insights or suggestions. If you would like to contact us in a less public venue, I invite you to email me at shakespeare@olemiss.edu or just come talk to me when you see me at a conference event!

A handwritten signature in black ink, which appears to read 'Karen Raber'. The signature is fluid and cursive.

Karen Raber

*The SAA would like to thank Lena Orlin
for her many years of successful leadership, and
Georgetown University for its unstinting support of the organization.*



OFFICERS

EXECUTIVE DIRECTOR

Karen Raber
University of Mississippi

ASSISTANT DIRECTOR

Bi-qi Beatrice Lei
National Taiwan University

PROGRAM ASSOCIATE

Donna Even-Kesef
Stanford University

PROJECT COORDINATOR

Ginny McCarley
University of Mississippi

With the Assistance of

Jackie Hopkins

Anne O'Reilly

PROGRAM PLANNING
COMMITTEE

Erika T. Lin, Chair
Graduate Center, CUNY

Ruben Espinosa
University of Texas, El Paso

Heather Hirschfeld
University of Tennessee

Jonathan Hope
Arizona State University

Tiffany Werth
University of California, Davis

William N. West
Northwestern University

BOARD OF TRUSTEES

PRESIDENT

Ayanna Thompson
Arizona State University

VICE-PRESIDENT

Katherine Rowe
College of William and Mary

IMMEDIATE PAST PRESIDENT

Wendy Wall
Northwestern University

TRUSTEES

Gina Bloom
University of California, Davis

Heidi Brayman
University of California, Riverside

Ruben Espinosa
University of Texas, El Paso

Farah Karim-Cooper
Shakespeare's Globe

Erika T. Lin
Graduate Center, CUNY

Joyce Green MacDonald
University of Kentucky

LOCAL ARRANGEMENTS
COMMITTEE

Katharine Maus, Chair
University of Virginia

Sharon Achinstein
*Johns Hopkins University, Zanvyl Krieger
School of Arts and Sciences*

Katherine Attie
Towson University

Urvashi Chakravarty

George Mason University

Katherine Cleland

Virginia Tech

Ralph Alan Cohen

American Shakespeare Center

Drew Daniel

Johns Hopkins University

Hank Dobin

Washington and Lee University

Holly Dugan

George Washington University

Richard Finkelstein

University of Mary Washington

Paul Menzer

Mary Baldwin University, Shakespeare and Performance and the American Shakespeare Center

Erin Minear

College of William and Mary

Holly Pickett

Washington and Lee University

Anita Sherman

American University

Rochelle Smith

Frostburg State University, Department of English and Foreign Languages

Scott Trudell

The University of Maryland

Michael Witmore

The Folger Shakespeare Library

SPONSORS

Folger Shakespeare Library

George Washington University

University of Virginia

Virginia Tech

Mary Baldwin University, Shakespeare and Performance and the American Shakespeare Center

The University of Maryland

College of William and Mary

Washington and Lee University

The Sheridan Libraries and the Virginia Fox Stern Center for the History of the Book in the Renaissance, Johns Hopkins University

The Alexander Grass Humanities Institute, Johns Hopkins University

The Charles S. Singleton Center for the Study of Premodern Europe, Johns Hopkins University

Krieger School of Arts and Sciences, Johns Hopkins University

University of Mary Washington

Department of English, Johns Hopkins University

Frostburg State University, Department of English and Foreign Languages

Towson University

George Mason University

American University

Georgetown University

And

University of Mississippi



Renaissance Washington, D.C. Downtown Hotel

Admission to conference events is by name badge only.

The hashtag for the 2019 SAA Annual Meeting is #Shax2019.

EXHIBITORS

ACMRS

Bloomsbury Academic

Cambridge University Press

Edinburgh University Press

Folger Shakespeare Library

Good Tickle Brain

LEMDO / DRE / MoEML / ISE / QME

Manchester University Press

Mary Baldwin University Shakespeare
and Performance and the American
Shakespeare Center

Oxford University Press

Palgrave Macmillan

Shakespeare at Notre Dame

Shakespeare Inc.

The Scholar's Choice

The University of Chicago Press

University of Pennsylvania Press

2019 PROGRAM AT A GLANCE

WEDNESDAY, APRIL 17

4:00 p.m.	Registration	<i>Programs, name tags, tickets, information</i>	<i>Grand Ballroom Foyer</i>	10
5:00 p.m.	Meeting	<i>Town Hall Business Meeting for all members</i>	<i>Grand South</i>	10
6:00 p.m.	Cash Bar	<i>Open to registrants and registered guests</i>	<i>Grand North</i>	10
7:00 p.m.	Play Reading	<i>The White Devil Reading with Lara Bovilsky</i>	<i>Mount Vernon Square</i>	10
7:30 p.m.	Opening Night Screening	<i>A Midsummer Night's Dream with director Casey Wilder Mott</i>	<i>Grand South</i>	10

THURSDAY, APRIL 18

8:00 a.m.	Registration	<i>Programs, name tags, tickets, information</i>	<i>Grand Ballroom Foyer</i>	10
	Exhibits	<i>Book Exhibits</i>	<i>Congressional Hall B/C</i>	10
9:00 a.m.	Workshop	<i>Publishing Your Book: Proposals, Presses, and the Process</i>	<i>Mount Vernon A</i>	10
10:00 a.m.	Seminar	<i>5PP: Players, Playwrights, Playhouses, Plays, and Parishes</i>	<i>Meeting Room 7</i>	12
	Seminar	<i>Approaches to Aphra Behn's The Rover: Text, Teaching, and Performance</i>	<i>Capitol Room</i>	12
	Seminar	<i>As You Like It: Motley Approaches</i>	<i>Meeting Room 8</i>	12
	Seminar	<i>Class as Intersectional Phenomenon in Shakespeare</i>	<i>Meeting Room 9</i>	13
	Seminar	<i>Desire and the Nonhuman</i>	<i>Meeting Room 14</i>	13
	Seminar	<i>Early Modern Disability Methodologies</i>	<i>Meeting Room 5</i>	13
	Seminar	<i>First-Personal Shakespeare</i>	<i>Meeting Room 3</i>	13
	Seminar	<i>Iberian Romance and Its English Afterlives</i>	<i>Meeting Room 1</i>	14
	Seminar	<i>Law, Literature, and Constitutional Authority</i>	<i>Meeting Room 4</i>	15
	Seminar	<i>London as a Theatrical Space</i>	<i>Meeting Room 2</i>	14
	Seminar	<i>Manuscripts and Early Modern Drama</i>	<i>Meeting Room 10</i>	14
	Seminar	<i>Minor Affects and Feelings in Early Modern Environs</i>	<i>Meeting Room 13</i>	15



47TH ANNUAL MEETING

Shakespeare Association of America

THURSDAY, APRIL 18 *continued*

10:00 a.m. <i>continued</i>	Seminar	<i>Shakespeare and Cultural Appropriation, Part One</i>	Meeting Room 11	15
	Seminar	<i>Staging Muslims and Jews in Early Modern England</i>	Franklin Square	15
	Workshop	<i>Teaching Shakespeare Online</i>	Meeting Room 6	15
	Seminar	<i>The Unthinkable Renaissance</i>	Meeting Room 12	15
	Seminar	<i>Virtual Shakespeare</i>	Meeting Room 16	16
	Seminar	<i>"Washed in Lethe": Renaissance Cultures of Remembering and Forgetting</i>	Lafayette	16
	Seminar	<i>Women and Public Worship, 1500~1660</i>	Meeting Room 15	16
12:00 noon	Practicum	<i>Teaching Early Drama beyond the Anglosphere</i>	Pre-Function Grand Ballroom	17
	Meeting	<i>New Oxford Editorial Meeting</i>	Lafayette	17
1:30 p.m.	Roundtable	<i>New Directions in Sound Studies</i>	Grand North	17
	Panel Session	<i>Shakespeare and Transgender Theory</i>	Grand South	17
3:30 p.m.	Seminar	<i>Collecting Shakespeare</i>	Meeting Room 1	17
	Seminar	<i>Early Modern Sexual Knowledge</i>	Meeting Room 3	17
	Seminar	<i>Ecomaterialism and Performance</i>	Meeting Room 4	18
	Seminar	<i>Environments of Justice</i>	Meeting Room 13	18
	Seminar	<i>Fellowship in Shakespeare's Time</i>	Meeting Room 6	18
	Seminar	<i>Jacobean Hispanophilia and English Drama</i>	Meeting Room 10	18
	Seminar	<i>The King's Men and Their Playwrights</i>	Meeting Room 7	19
	Seminar	<i>London Incorporated: Theater and Institutional Life</i>	Meeting Room 2	19
	Seminar	<i>Occult Agents in Shakespeare, Part One</i>	Meeting Room 5	19
	Seminar	<i>Pleasure and Interpretation in Shakespeare and Spenser, Part One</i>	Meeting Room 14	19
	Seminar	<i>Populist Shakespeare Today</i>	Meeting Room 11	20
	Seminar	<i>Race: Comparative and Transnational Approaches</i>	Meeting Room 8	20
	Seminar	<i>Shakespeare and "Minor" Dramatists</i>	Meeting Room 9	20
	Seminar	<i>Shakespeare at Scale</i>	Meeting Room 12	20

THURSDAY, APRIL 18 *continued*

3:30 p.m. <i>continued</i>	Seminar	<i>Shakespearean Revulsions</i>	<i>Meeting Room 16</i>	21
	Seminar	<i>Webster's The White Devil: New Directions</i>	<i>Meeting Room 15</i>	21
	Exhibits	<i>Digital Exhibits</i>	<i>Congressional Hall B/C</i>	21
	Workshop	<i>Performance Workshop Arden/Everywhere</i>	<i>Mount Vernon A</i>	21
4:30 p.m.	Reception	<i>Drinks reception for Edinburgh Critical Studies in Shakespeare and Philosophy</i>	<i>Congressional Hall B/C</i>	22
6:00 p.m.	Reception	<i>Name tags required for entry</i>	<i>Grand Ballroom</i>	22

FRIDAY, APRIL 19

7:30 a.m.	Yoga	<i>Shakespeare Yoga</i>	<i>Penn Quarter</i>	24
8:00 a.m.	Registration	<i>Programs, name tags, tickets, information</i>	<i>Grand Ballroom Foyer</i>	24
	Exhibits	<i>Book Exhibits</i>	<i>Congressional Hall B/C</i>	24
	Breakfast	<i>Breakfast for Graduate Students hosted by the Trustees</i>	<i>Renaissance Ballroom East</i>	24
9:00 a.m.	Panel Session	<i>Rhetorics of Performance</i>	<i>Grand North</i>	24
	Panel Session	<i>From Theory to Data and Back</i>	<i>Grand South</i>	24
10:30 a.m.	Break	<i>Coffee and tea served</i>	<i>Grand Ballroom Foyer</i>	24
11:00 a.m.	Meeting	<i>International Shakespeare Association General Meeting</i>	<i>Renaissance B</i>	24
	Seminar	<i>Art-Religion in Shakespeare</i>	<i>Meeting Room 6</i>	24
	Seminar	<i>Disability and Its Intersections</i>	<i>Meeting Room 4</i>	25
	Seminar	<i>Invisible Presences: Detecting the Unseen in Renaissance Drama</i>	<i>Meeting Room 16</i>	25
	Seminar	<i>Modern Scholarly Editions: Challenges and Opportunities</i>	<i>Meeting Room 5</i>	25
	Seminar	<i>Occult Agents in Shakespeare, Part Two</i>	<i>Meeting Room 3</i>	26
	Seminar	<i>#OpenSecrets</i>	<i>Meeting Room 7</i>	26
	Seminar	<i>Pleasure and Interpretation in Shakespeare and Spenser, Part Two</i>	<i>Meeting Room 13</i>	26
	Seminar	<i>Provincial Shakespeare</i>	<i>Meeting Room 8</i>	26
	Seminar	<i>Race and/as Affect in Early Modern Literature</i>	<i>Meeting Room 9</i>	27



47TH ANNUAL MEETING

Shakespeare Association of America

FRIDAY, APRIL 19 *continued*

11:00 a.m. <i>continued</i>	Seminar	<i>Shakespeare and Cultural Appropriation, Part Two</i>	Meeting Room 11	27
	Seminar	<i>Shakespeare and the District</i>	Meeting Room 1	27
	Seminar	<i>Shakespeare and Visual Cultures, Old and New</i>	Meeting Room 15	27
	Workshop	<i>Shakespeare on Our Hands</i>	Meeting Room 2	27
	Seminar	<i>Shakespeare's Forms, Part One</i>	Meeting Room 10	28
	Seminar	<i>Shakespeare's Language: Changing Methods</i>	Lafayette	28
	Seminar	<i>Shakespearean Skies: Weather and Climate</i>	Meeting Room 12	28
	Seminar	<i>Theatrical Skepticism</i>	Mount Vernon B	28
	Seminar	<i>World, Globe, Planet: Macrocosmic Thinking in the Age of Shakespeare</i>	Mount Vernon A	28
	Workshop	<i>Writing about Shakespeare and Early Modern Drama for a Broader Public</i>	Carnegie	29
	Exhibits	<i>Digital Exhibits</i>	Congressional Hall B/C	29
	Workshop	<i>Performance Workshop Arden of Faversham</i>	Renaissance B	29
1:30 p.m.	Annual Luncheon	<i>Meal tickets required for entry</i>	Grand Ballroom	29
3:30 p.m.	Plenary Session	<i>Looking Forward: New Directions in Early Modern Race Studies</i>	Renaissance Ballroom	30
5:15 p.m.	Cash Bar	<i>Scholars of Color Social</i>	Grand Ballroom North	30
7:30 p.m.	Performance	<i>The Dramatic Exploits of Edmund Kean</i>	Renaissance West	30

SATURDAY, APRIL 20

7:30 a.m.	Yoga	<i>Shakespeare Yoga</i>	Penn Quarter	36
8:00 a.m.	Information	<i>Programs, name tags, tickets, information</i>	Grand Ballroom Foyer	36
	Exhibits	<i>Book Exhibits close at 12:00 noon</i>	Congressional Hall B/C	36

Catch Boxes are provided courtesy of Helms Briscoe.

SATURDAY, APRIL 20 *continued*

8:30 a.m.	Workshop	<i>Workshop for Teachers</i>	<i>Mount Vernon</i>	36
9:00 a.m.	Roundtable	<i>Citizen Shakespeare</i>	<i>Grand South</i>	36
	Roundtable	<i>Wherefore Ecofeminism?</i>	<i>Grand North</i>	36
10:30 a.m.	Break	<i>Coffee and tea served</i>	<i>Grand Ballroom Foyer</i>	36
11:00 a.m.	Plenary Session	<i>NextGenPlen</i>	<i>Renaissance Ballroom</i>	36
12:30 p.m.	Roundtable	<i>The Economics of Shakespeare Publishing</i>	<i>Grand North</i>	37
2:00 p.m.	Panel Session	<i>Practice and Process in Early Modern Poetics</i>	<i>Grand North</i>	37
	Panel Session	<i>Shakespearean Futures: Shakespeare and a Living Wage</i>	<i>Grand South</i>	37
4:00 p.m.	Workshop	<i>Editing Editing</i>	<i>Meeting Room 12</i>	37
	Seminar	<i>Navigating Early Modern Interfaces</i>	<i>Capitol Room</i>	38
	Seminar	<i>Performing Women/Performing Gender in the Age of Shakespeare and Beyond</i>	<i>Meeting Room 4</i>	38
	Seminar	<i>Print, Conservation, and Waste</i>	<i>Meeting Room 6</i>	38
	Seminar	<i>Refuge in Shakespeare's Europe</i>	<i>Meeting Room 5</i>	38
	Seminar	<i>Shakespeare in Film History</i>	<i>Meeting Room 15</i>	39
	Seminar	<i>Shakespeare on the Contemporary Regional Stage</i>	<i>Meeting Room 13</i>	39
	Seminar	<i>Shakespeare, Race, and the Practical Humanities</i>	<i>Meeting Room 8</i>	39
	Seminar	<i>Shakespeare the Documentary</i>	<i>Meeting Room 10</i>	39
	Seminar	<i>Shakespeare's Enemies</i>	<i>Meeting Room 7</i>	40
	Seminar	<i>Shakespeare's Forms, Part Two</i>	<i>Meeting Room 3</i>	40
	Seminar	<i>Shakespeare's Greek</i>	<i>Meeting Room 14</i>	40
	Seminar	<i>Signs of the Sexed Body in Early Modern Drama</i>	<i>Meeting Room 11</i>	40
	Workshop	<i>Teaching the Premodern in a Time of White Supremacy</i>	<i>Meeting Room 16</i>	41
	Seminar	<i>Tudor Performance: Contexts, Traditions, Afterlives</i>	<i>Meeting Room 2</i>	42
	Workshop	<i>Performance Workshop: What Do Romeo and Juliet Really Look Like?: Unconscious Bias through a Shakespearean Lens</i>	<i>Mount Vernon A</i>	42
7:00 p.m.	Discussion	<i>A Conversation with Supreme Court Justice Stephen Breyer</i>	<i>Grand South</i>	42
10:00 p.m.	Dance	<i>The Malone Society Dance</i>	<i>Renaissance Ballroom</i>	42



PROGRAM DETAILS

WEDNESDAY, APRIL 17

4:00 to 7:00 p.m.

Advance Registration
Grand Ballroom Foyer

5:00 to 6:00 p.m.

Town Hall Business Meeting
Grand South
Open to all registrants.

6:00 to 7:00 p.m.

Cash Bar
Grand North
Open to all registrants and their registered guests.

7:00 to 9:00 p.m.

Play Reading: *The White Devil*
Mount Vernon Square
Lara Bovilsky, *University of Oregon*

Open to all registrants and their registered guests.
All registrants are welcome to a participatory reading of Webster's tragic satire, famous for its scathing depiction of Italy's – and England's – moral corruption.

7:30 to 10:00 p.m.

Opening Night Screening: *A Midsummer Night's Dream*
Grand South

Q&A with director Casey Wilder Mott to follow screening.

A fresh and stylish reinvention of one of Shakespeare's most beloved creations, this modern vision breathes new life into a classic tale. Directed by first-time writer-director Casey Mott,

the film features performances by Hamish Linklater (Lysander), Rachael Leigh Cook (Hermia), Finn Wittrock (Demetrius), and Lily Rabe (Helena).

THURSDAY, APRIL 18

8:00 a.m. to 6:00 p.m.

Registration
Grand Ballroom Foyer

Book Exhibits
Congressional Hall B/C

9:00 a.m. to 12:00 noon

Workshop: Publishing Your Book: Proposals, Presses, and the Process
Mount Vernon A

LEADERS: Jane Hwang Degenhardt, *University of Massachusetts, Amherst* and Henry S. Turner, *Rutgers University*

Katherine B. Attie, *Towson University*
Lisa M. Barksdale-Shaw, *Michigan State University*

Caralyn Bialo, *Manhattanville College*

Roya Biggie, *Knox College*

Valerie Billing, *Central College*

Laura DeFurio, *University of Alabama*

Samantha Diane Dressel,

Chapman University

Emily Fine, *University of Alabama*

Jennifer Flaherty, *Georgia College*

Gregory A. Foran, *Nazareth College*

Penelope H. Geng, *Macalester College*

Perry D. Guevara, *Dominican*

University of California

Sharon J. Harris, *Brigham Young University*

Daniel Lindfors Keegan, *American*

University of Sharjah

Victor Lenthe, *Bilkent University*

Nathaniel C. Leonard, *Westminster*

College, Fulton

"A FEAT."

— SHERI LINDEN, THE HOLLYWOOD REPORTER

**"THIS FILM IS
PURE DELIGHT."**

— BRADLEY GIBSON, FILM THREAT

A Midsummer Night's Dream

SHREYAS KUMAR AND JACOB LATT MOUNTAIN PRESENT AN AMERICAN FILMMAKERS ASSOCIATION PRODUCTION "A MIDSUMMER NIGHT'S DREAM"
CASTING BY JESSICA WALKER AND JACOB LATT MOUNTAIN. COSTUME DESIGNER: JESSICA WALKER. HAIR: JESSICA WALKER. MAKEUP: JESSICA WALKER. PRODUCTION DESIGNER: JESSICA WALKER. EXECUTIVE PRODUCERS: JESSICA WALKER AND JACOB LATT MOUNTAIN. PRODUCED BY JESSICA WALKER AND JACOB LATT MOUNTAIN. WRITTEN AND DIRECTED BY JESSICA WALKER. CASTING BY JESSICA WALKER AND JACOB LATT MOUNTAIN. COSTUME DESIGNER: JESSICA WALKER. HAIR: JESSICA WALKER. MAKEUP: JESSICA WALKER. PRODUCTION DESIGNER: JESSICA WALKER. EXECUTIVE PRODUCERS: JESSICA WALKER AND JACOB LATT MOUNTAIN. PRODUCED BY JESSICA WALKER AND JACOB LATT MOUNTAIN. WRITTEN AND DIRECTED BY JESSICA WALKER.





Maria Sequeira Mendes,
Universidade de Lisboa
Dianne Mitchell, *The Queen's
College, Oxford*
Jamie Paris, *Corpus Christi
College, British Columbia*
Jennifer Park, *University of North
Carolina, Greensboro*
Kirk Quinsland, *Fordham University*
Marie Roche, *University of
Massachusetts, Amherst*
Christina Romanelli, *Meredith College*
Amos Rothschild, *St. Thomas
Aquinas College*
Jennifer R. Rust, *St. Louis University*
Tyler Sasser, *University of Alabama*
Rochelle Smith, *Frostburg State University*
Eric D. Vivier, *Mississippi State University*
Jennie Marie Votava, *Allegheny College*

10:00 a.m. to 12:00 noon

**Seminar: 5PP: Players, Playwrights,
Playhouses, Plays, and Parishes**
Meeting Room 7

**LEADER: Alan H. Nelson, University
of California, Berkeley**

John H. Astington, *University of Toronto*
Sean M. Benson, *University of Dubuque*
Nicola Boyle, *Harlaxton College,
University of Evansville*
David George, *Urbana University*
Christopher Highley, *Ohio State University*
William Ingram, *University of Michigan*
David Kathman, *Chicago, IL*
Sally-Beth MacLean, *University of Toronto*
Geoffrey David Marsh, *Victoria
& Albert Museum*
Kara J. Northway, *Kansas State University*
Matteo Pangallo, *Virginia
Commonwealth University*
Gerit Quealy, *New York, NY*
Paul Whitfield White, *Purdue University*
Emily Yates, *Michigan State University*

**Seminar: Approaches to Aphra
Behn's *The Rover*: Text, Teaching,
and Performance**
Capitol Room

**LEADERS: Claire Bowditch,
Loughborough University and Elaine
Hobby, Loughborough University**

Judith Petterson Clark, *Stephens College*
Taylor Corse, *Arizona State University*
Alexander Paulsson Lash,
Columbia University
Shawn William Moore, *Florida
Southwestern State College*
Vanessa L. Rapatz, *Ball State University*
Rachel J. Willie, *Liverpool John
Moores University*

**Seminar: As You Like It:
Motley Approaches**
Meeting Room 8

**LEADER: Rob Wakeman,
Mount St. Mary College**

Charlene Cruxent, *Université
Paul-Valéry Montpellier 3*
James A. DeMasi, *University of Dallas*
Vernon Guy Dickson, *Florida
International University*
Jay Farness, *Northern Arizona University*
Frances L. Helphinstine, *Morehead
State University*
Lalita Pandit Hogan, *University
of Wisconsin, La Crosse*
Patrick Colm Hogan, *University
of Connecticut*
Maurice Hunt, *Baylor University*
Sandra A. Logan, *Michigan State University*
Ian Munro, *University of California, Irvine*
Alexander Douglas Thom, *Shakespeare
Institute, University of Birmingham*
Lauren Weindling, *Auburn University*

Seminar: Class as Intersectional Phenomenon in Shakespeare
Meeting Room 9

LEADER: Laurie Ellinghausen,
University of Missouri, Kansas City

Ronda Arab, *Simon Fraser University*
Lillie Arnott, *Queen's University Belfast*
Samantha Jayne Demmerle,
Indiana University
Timothy Francisco, *Youngstown State University*
Juan Lamata, *Stanford University*
Sarah Lewis, *King's College London*
Mark Netzloff, *University of Wisconsin, Milwaukee*
Priyanka Roy, *Victoria University of Wellington*
James R. Siemon, *Boston University*
Natalie Suzelis, *Carnegie Mellon University*
Lisa Ulevich, *University of Wisconsin, Whitewater*

Seminar: Desire and the Nonhuman
Meeting Room 14

LEADERS: Jean E. Feerick, *John Carroll University* and Shannon Elizabeth Kelley, *Fairfield University*

Benjamin Bertram, *University of Southern Maine*
Shannon Jane Garner-Balandrin,
Northeastern University
Jason Charles Hogue, *University of Texas, Arlington*
Scott Maisano, *University of Massachusetts, Boston*
Lynn M. Maxwell, *Spelman College*
Kristen McCants, *University of California, Santa Barbara*
Benjamin Moran, *Ohio State University*
Vin Nardizzi, *University of British Columbia*
Lisa Robinson, *St. John's University*
Molly E. Seremet, *Mary Baldwin University*
Laurie Shannon, *Northwestern University*
Christine Varnado, *University at Buffalo, SUNY*
Robert N. Watson, *University of California, Los Angeles*

Seminar: Early Modern Disability Methodologies
Meeting Room 5

LEADERS: Genevieve Love, *Colorado College* and Katherine Schaap Williams, *University of Toronto*

Susan L. Anderson, *Sheffield Hallam University*
Andrew Bozio, *Skidmore College*
Christine Marie Gottlieb, *California State University, East Bay*
Musa Gurnis, *Washington University in St. Louis*
Robert W. Jones, *University of Texas, Austin*
Lenora Bellee Jones-Pierce, *Middle Tennessee State University*
Sawyer K. Kemp, *University of California, Davis*
Eileen Sperry, *College of St. Rose*

Seminar: First-Personal Shakespeare
Meeting Room 3

LEADERS: Sara Coodin, *University of Oklahoma* and Ambereen Dadabhoy, *Harvey Mudd College*

Thomas P. Cartelli, *Muhlenberg College*
Stephen Deng, *Michigan State University*
James Kearney, *University of California, Santa Barbara*
Fernanda Teixeira Medeiros, *Universidade do Estado do Rio de Janeiro, Brazil*
Sara Morrison, *William Jewell College*
Esei M. Murakishi, *Washington University in St. Louis*
Amanda Kay Ruud, *University of Southern California*
Gregory Sargent, *University of Massachusetts, Amherst*
Deb Streusand, *University of Texas, Austin*
Robert William Tate, *Duke University*
Jessica Tooker, *Indiana University, Bloomington*
L. Lehua Yim, *San Francisco, CA*



**Seminar: Iberian Romance
and Its English Afterlives**
Meeting Room 1

LEADERS: Joyce Boro, *Université
de Montréal* and Louise Wilson,
Liverpool Hope University

Robin Bower, *Pennsylvania State University*
Barbara Fuchs, *University of
California, Los Angeles*
Donna Hamilton, *University of Maryland*
Helen Moore, *Corpus Christi College, Oxford*
Kristen L. Olson, *Pennsylvania
State University*
Leticia Álvarez-Recio, *Universidad de Sevilla*
Jordi Sánchez-Martí,
Universidad de Alicante
Susanne L. Wofford, *New York University*

**Seminar: Law, Literature,
and Constitutional Authority**
Meeting Room 4

LEADERS: Stephanie Elsky,
Rhodes College and Rayna
Kalas, *Cornell University*

Jessica Apolloni, *Christopher
Newport University*
Andrew S. Brown, *Yale University*
Urvashi Chakravarty, *George
Mason University*
Kevin Curran, *Université de Lausanne*
Andrew Griffin, *University of
California, Santa Barbara*
Matthew J. Kendrick, *William
Paterson University*
Daeyeong (Dan) Kim, *Stanford University*
Ben LaBreche, *University of
Mary Washington*
Brian C. Lockey, *St. John's University*
Timothy Lundy, *Columbia University*
Joseph Mansky, *Bard College*
Bernadette Meyler, *Stanford University*
Carolyn Sale, *University of Alberta*
Anne-Marie E. Walkowicz,
Central State University

**Seminar: London as a
Theatrical Space**
Meeting Room 2

LEADERS: Andrew Gordon,
University of Aberdeen and Tracey
Hill, *Bath Spa University*

David M. Bergeron, *University of Kansas*
Katherine Blankenau,
Northwestern University
Sarah Crover, *University of
Wisconsin, Madison*
Rachael Deagman, *Simonetta
University of Colorado, Boulder*
Heather C. Easterling, *Gonzaga University*
Mark B. Kaethler, *Medicine Hat College*
Elizabeth Labiner, *University of Arizona*
Jess Landis, *Franklin Pierce University*
Kathleen Lynch, *Folger Shakespeare Library*
Sarah Mayo, *University of Georgia*
Halyna Olexiyivna Pastushuk,
Ukrainian Catholic University
Maria Shmygol, *Université de Genève*
Betsy Sullivan, *University of
Southern California*
Adam Zucker, *University of
Massachusetts, Amherst*

**Seminar: Manuscripts
and Early Modern Drama**
Meeting Room 10

LEADERS: Ivan Lupić, *Stanford
University* and Misha Teramura,
University of Toronto

Daniel Blank, *Harvard University*
Margaret Rich Greer, *Duke University*
Jonathan H. Holmes, *Central State University*
John Jowett, *Shakespeare Institute,
University of Birmingham*
James Purkis, *University of Western Ontario*
Sid Ray, *Pace University*
James H. Seth, *Auburn University*
Leslie Thomson, *University of Toronto*
Jesús Tronch-Pérez, *Universitat de València*
David Weiss, *Atlanta, GA*
Paul Werstine, *Western University*
Daniel Yabut, *Université Paul-
Valéry Montpellier 3*

Seminar: Minor Affects and Feelings in Early Modern Environs
Meeting Room 13

LEADER: Tripti Pillai, Coastal Carolina University

Katie Adkison, *University of California, Santa Barbara*
Jen Boyle, *Coastal Carolina University*
Paul Budra, *Simon Fraser University*
Sheila Coursey, *University of Michigan*
Jennifer Feather, *University of North Carolina, Greensboro*
Robin Hizme, *Queens College, CUNY*
Allison Kellar, *Wingate University*
Ineke Murakami, *University at Albany, SUNY*
Caro Pirri, *Rutgers University*
Jillian Snyder, *University of Notre Dame*
Matthew Drew Wagner, *University of Surrey*

Seminar: Shakespeare and Cultural Appropriation, Part One
Meeting Room 11

LEADERS: Vanessa I. Corredera, Andrews University and Geoffrey Way, Washburn University

Rebekah Bale, *Institute for Tourism Studies, Macao*
Elena Bandin, *Universidad de León*
Thea Buckley, *Queen's University Belfast*
Walter W. Cannon, *Central College Iowa*
Kirk Hendershott-Kraetzer, *Olivet College*
Christopher Holmes, *SUNY Maritime College*
Helen Alexandra Hopkins, *Birmingham City University*
Taarini Mookherjee, *Columbia University*
Carol Thomas Neely, *University of Illinois, Urbana-Champaign*
Shormishtha Panja, *University of Delhi*
Elizabeth J. Rivlin, *Clemson University*
Ana Weinberg, *De Montfort University*
Donna Woodford-Gormley, *New Mexico Highlands University*

Seminar: Staging Muslims and Jews in Early Modern England
Franklin Square

LEADER: M. Lindsay Kaplan, Georgetown University

Peter Berek, *Amherst College*
Stephanie Chamberlain, *Southeast Missouri State University*
Andrea Crow, *Boston College*
Heather Anne Hirschfeld, *University of Tennessee*
Leighla Khansari, *Ohio State University*

Workshop: Teaching Shakespeare Online
Meeting Room 6

LEADER: Loreen L. Giese, Ohio University

Heather M. Ackerman, *Arizona State University*
Jennifer Black, *Boise State University*
Margaret Christian, *Pennsylvania State University, Lehigh Valley*
Annette Drew-Bear, *Washington and Jefferson College*
Natalie Katerina Eschenbaum, *University of Wisconsin, La Crosse*
Susan Caroline Frye, *University of Wyoming*
Joseph Paul Haughey, *Northwest Missouri State University*
Heather J. Murray, *Coastal Pines Technical College*
Erin Marie Sullivan, *Shakespeare Institute, University of Birmingham*
Timothy A. Turner, *University of South Florida Sarasota-Manatee*

Seminar: The Unthinkable Renaissance
Meeting Room 12

LEADER: Erica Fudge, University of Strathclyde

Mary Adams, *Western Carolina University*
Rebecca Ann Bach, *University of Alabama, Birmingham*
Andrew Barnaby, *University of Vermont*
Cyndia Susan Clegg, *Pepperdine University*
Eric Dunnum, *Campbell University*



Erin Ellerbeck, *University of Victoria*
Gillian Murray Kendall, *Smith College*
Sophie Shorland, *University of Warwick*
Anna-Claire Simpson, *University of Massachusetts, Amherst*
Deanna Smid, *Brandon University*
Robert D. Stefanek, *United States Air Force Academy*
Verena Theile, *North Dakota State University*
Kemal Onur Toker, *Brandeis University*
Julian Yates, *University of Delaware*

Seminar: Virtual Shakespeare
Meeting Room 16

LEADER: Rebecca Bushnell,
University of Pennsylvania

Gina Bloom, *University of California, Davis*
Amy Michelle Borsuk, *Queen Mary University of London*
Mariacristina Cavecchi, *Università degli Studi di Milano*
Valerie M. Fazel, *Arizona State University*
Matthew P. Harrison, *West Texas A&M University*
Jennifer R. Holl, *Rhode Island College*
Emily Rose Lathrop, *George Washington University*
Michael Lutz, *Independent Scholar*
Márcia Amaral Peixoto Martins, *Pontifícia Universidade Católica do Rio de Janeiro*
Valerie Clayman Pye, *Long Island University, Post*
Ofelia Da C. Machado Sagres, *Rio de Janeiro, Brazil*
Laura Turchi, *University of Houston*
Garry Walton, *Meredith College*
Nora J. Williams, *Independent Scholar*

**Seminar: “Washed in Lethe”:
Renaissance Cultures of
Remembering and Forgetting
Lafayette**

LEADERS: Jonathan Baldo, Eastman School of Music, University of Rochester and Isabel C. Karremann, Universität Würzburg

Stephanie Bahr, *Hamilton College*
J. F. Bernard, *Champlain College*

Evan Choate, *Rice University*
Catherine Elliott Tisdale, *University of Massachusetts, Amherst*
William E. Engel, *University of the South, Sewanee*
Rebecca Helfer, *University of California, Irvine*
Peter Holland, *University of Notre Dame*
Bill Kerwin, *University of Missouri*
Devori Kimbro, *University of Tennessee, Chattanooga*
Gaywyn E. Moore, *Missouri Western State University*
Marissa Nicosia, *Pennsylvania State University, Abington College*
Dan Normandin, *Washington University in St. Louis*
Lieke Stelling, *Utrecht University*
Evelyn Tribble, *University of Connecticut*

**Seminar: Women and Public
Worship, 1500-1660**
Meeting Room 15

Sponsored by the Society for the Study of Early Modern Woman and Gender

LEADERS: Jaime Goodrich, Wayne State University and Micheline White, Carleton University

Susan M. Felch, *Calvin College*
Katharine E. Landers, *University of North Carolina*
Jessica Lin Malay, *University of Huddersfield*
Cristina Malcolmson, *Bates College*
Susannah Brietz Monta, *University of Notre Dame*
Elizabeth Patton, *Johns Hopkins University*
Jenny Rebecca Rytting, *Northwest Missouri State University*
Elizabeth Sharrett, *Lynchburg College*
Melanie Simoes Santos, *University of Toronto*
Rosalind Lewin Smith, *University of Newcastle*
Suzanne Trill, *University of Edinburgh*
Marion Wynne-Davies, *University of Surrey*

12:00 noon to 1:30 p.m.

Practicum: Teaching Early Drama beyond the Anglosphere

Pre-Function Grand Ballroom

LEADERS: Anston Bosman, *Amherst College* and Barbara Fuchs, *University of California, Los Angeles*

Drop-in workshop open to all registrants.

New Oxford Editorial Meeting

Lafayette

Open to all members.

1:30 to 3:00 p.m.

Roundtable: New Directions in Sound Studies

Grand North

SESSION ORGANIZER AND CHAIR: Keith M. Botelho, *Kennesaw State University*

Patricia Fumerton, *University of California, Santa Barbara*

Bruce R. Smith, *University of Southern California*

Simon Smith, *Shakespeare Institute, University of Birmingham*

Scott A. Trudell, *University of Maryland*

Lucía Martínez Valdivia, *Reed College*

Sarah F. Williams, *University of South Carolina*

Panel Session: Shakespeare and Transgender Theory

Grand South

SESSION ORGANIZER: Alexa Alice Joubin, *George Washington University*

CHAIR: Sujata Iyengar, *University of Georgia*

RESPONDENT: Will Fisher, *Lehman College and The CUNY Graduate Center*

Shakespeare and Transgender Theory

Alexa Alice Joubin, *George Washington University*

Trans Residue: Nonbinary Affect and Boy Actors' Adult Careers

Simone Chess, *Wayne State University*

A Woman's Prick: Trans

Technogenesis in Sonnet 20

Colby Gordon, *Bryn Mawr College*

Trans-Cultures: Feminisms, Transgender Theory, and Shakespeare Studies

Lisa S. Starks, *University of South Florida, St. Petersburg*

3:30 to 5:30 p.m.

Seminar: Collecting Shakespeare
Meeting Room 1

LEADER: Aaron T. Pratt, *University of Texas, Austin*

Faith Acker, *Northern Virginia Community College*

Tamara Atkin, *Queen Mary University of London*

Aleida Auld, *Université de Genève*

Patricia Badir, *University of British Columbia*

Claire M. L. Bourne, *Pennsylvania State University*

Emma Lesley Depledge,

Université de Neuchâtel

Laura A. Estill, *St. Francis Xavier University*

Emily Glider, *Yale University*

David Harper, *United States Military Academy*

Adam G. Hooks, *University of Iowa*

Amy Lidster, *King's College London*

Sarah Lindenbaum, *Illinois*

Wesleyan University

Joshua J. McEvilla, *University of Toronto*

Peter Picetti, *University of Nevada, Reno*

Georgianna Ziegler, *Folger*

Shakespeare Library

Seminar: Early Modern Sexual Knowledge

Meeting Room 3

LEADER: James M. Bromley, *Miami University*

Alicia Andrzejewski, *Graduate Center, CUNY*

Anthony Gerard Barthelemy,

University of Miami

Eric Brinkman, *Ohio State University*

Heather Frazier, *Ohio State University*

Gillian Knoll, *Western Kentucky University*

Matt Kozusko, *Ursinus College*

Ian Frederick Moulton, *Arizona State University*



James Y. Mulder, *Bentley University*
James Trygve Newlin, *Case Western Reserve University*
Melissa E. Sanchez, *University of Pennsylvania*
Valerie Traub, *University of Michigan*

Seminar: Ecomaterialism and Performance

Meeting Room 4

LEADERS: Todd Andrew Borlik, University of Huddersfield and Randall Martin, University of New Brunswick

Craig Dionne, *Eastern Michigan University*
Lowell Duckert, *University of Delaware*
Christopher D. Foley, *University of Southern Mississippi*
David B. Goldstein, *York University*
Laurie Johnson, *University of Southern Queensland*
Gwilym Jones, *University of Westminster*
John Joseph, *Joughin UK*
Natasha Korda, *Wesleyan University*
Gretchen E. Minton, *Montana State University*
Bernadette Myers, *Columbia University*
Hillary M. Nunn, *University of Akron*
Evelyn O'Malley, *University of Exeter*
Chloe Kathleen Preedy, *University of Exeter*
McKenna Suzanne Rose, *Georgia Institute of Technology*
Jeffrey S. Theis, *Salem State University*
Benjamin D. Vanwagoner, *Baruch College, CUNY*

Seminar: Environments of Justice

Meeting Room 13

LEADERS: Chris Barrett, Louisiana State University and Sarah Higinbotham, Emory University

Alison A. Chapman, *University of Alabama, Birmingham*
Peter Robert Cibula, *University of California, Irvine*
Kyle DiRoberto, *University of Arizona*
John W. Ellis-Etchison, *Rice University*
Sarah E. R. Linwick, *Washington, D.C.*
Ian MacInnes, *Albion College*
Elizabeth Katherine McIntosh, *Columbia University*
David J. Morrow, *College of St. Rose*

Jessie Herrada Nance, *Portland State University*
Lauren Shook, *Texas Lutheran University*
Kelly J. Stage, *University of Nebraska*
William Steffen, *American International College*
Matthew M. Thiele, *Glenville State College*
Luke Wilson, *Ohio State University*

Seminar: Fellowship in Shakespeare's Time

Meeting Room 6

LEADERS: Stephen Guy-Bray, University of British Columbia and Nathan Szymanski, Kwantlen Polytechnic University

Rob Carson, *Hobart and William Smith Colleges*
Huw Griffiths, *University of Sydney*
Megan L. Herrold, *University of Southern California*
Kimberly A. Huth, *California State University, Dominguez Hills*
Bradley Irish, *Arizona State University*
Tai-won Kim, *Sogang University*
Rebecca Lemon, *University of Southern California*
Christina Luckyj, *Dalhousie University*
Kris McAbee, *University of Arkansas, Little Rock*
Jennifer Ellen Nicholson, *University of Sydney*
Ashley O'Mara, *Syracuse University*
Alison Searle, *University of Leeds*
James W. Stone, *American University*
Robert E. Stretter, *Providence College*
Richard Strier, *University of Chicago*
Will Tosh, *Shakespeare's Globe*

Seminar: Jacobean Hispanophilia and English Drama

Meeting Room 10

LEADERS: Eric John Griffin, Millsaps College and Alexander Samson, University College London

Rena Bood, *Universiteit van Amsterdam*
Zainab Cheema, *University of Texas, Austin*
Monica Chesnoiu-Matei, *Ovidius University of Constanta*

José Manuel González,
Universidad de Alicante
 Eder Jaramillo, *University of Nebraska*
 Sonja Kleij, *Queen's University Belfast*
 Victoria Muñoz, *Hostos Community*
College, CUNY
 David Nicol, *Dalhousie University*
 Elizabeth Marie Beaumont Reinwald,
University of Connecticut
 Amy L. Tigner, *University of Texas, Arlington*
 Sara V. Torres, *University of Virginia*
 Sabine Naomi Waasdorp,
Universiteit van Amsterdam

**Seminar: The King's Men
 and Their Playwrights**
Meeting Room 7

LEADERS: Meghan C. Andrews,
Lycoming College and **James J.**
Marino, Cleveland State University

Roberta Barker, *Dalhousie University*
 Meredith Beales, *University*
of British Columbia
 William C. Carroll, *Boston University*
 Ann C. Christensen, *University of Houston*
 Edward Gieskes, *University of South Carolina*
 Manuel Antonio Jacques,
Ohio State University
 Erin E. Kelly, *University of Victoria*
 Claire Kimball, *Dale City, VA*
 Karen Sawyer Marsalek, *St. Olaf College*
 Lori Humphrey Newcomb, *University*
of Illinois, Urbana-Champaign
 Richard Preiss, *University of Utah*
 Gregory M. Schnitzspahn, *Fisher College*
 Tiffany Stern, *Shakespeare Institute,*
University of Birmingham

**Seminar: London Incorporated:
 Theater and Institutional Life**
Meeting Room 2

LEADERS: Christi Spain-Savage,
Siena College and **Jordan Windholz,**
Shippensburg University

Carla Baricz, *Hebrew University of Jerusalem*
 Amanda Di Ponio, *Huron University College*
 Derrick Edwin Higginbotham,
University of Hawaii, Manoa
 Jeanne McCarthy, *Georgia Gwinnett College*

Vimala C. Pasupathi, *Hofstra University*
 Matthew Ritger, *Princeton University*
 Rachel E. Stewart, *University of Birmingham*
 Cristine M. Varholý, *Hampden-Sydney College*

**Seminar: Occult Agents in
 Shakespeare, Part One**
Meeting Room 5

LEADER: Mary Floyd-Wilson,
University of North Carolina

Caroline Bicks, *University of Maine*
 Beatrice Bradley, *University of Chicago*
 Jessica Hanselman Gray, *University*
of California, Davis
 Gina M. Di Salvo, *University of Tennessee*
 Molly M. Hand, *Florida State University*
 Brian J. Harries, *Concordia University*
 Phebe Jensen, *Utah State University*
 Amy Kenny, *University of California, Riverside*
 James A. Knapp, *Loyola University Chicago*
 Jesse M. Lander, *University of Notre Dame*
 Alexander Lowe McAdams, *Rice University*
 Sara Schlemm, *Cornell University*
 Tanya Schmidt, *New York University*

**Seminar: Pleasure and
 Interpretation in Shakespeare
 and Spenser, Part One**
Meeting Room 14

LEADERS: Joe Moshenska,
University of Oxford and **Leah J.**
Whittington, Harvard University

Amy Cooper, *United States*
Air Force Academy
 Hannah J. Crawforth, *King's College London*
 Clare R. Kinney, *University of Virginia*
 Ross Lerner, *Occidental College*
 Andrew Miller, *Williams College*
 Kevin Pask, *Concordia University*
 Robert L. Reid, *Emory and Henry College*
 Michael Schoenfeldt, *University of Michigan*
 Elizabeth Scott-Baumann,
King's College London
 Jennifer C. Vaught, *University*
of Louisiana, Lafayette
 Patricia B. Wareh, *Union College*
 Michael West, *Sacred Heart University*
 Matthew Zarnowiecki, *Touro College*



**Seminar: Populist
Shakespeare Today**
Meeting Room 11

LEADERS: Peter Kuling, *University
of Ottawa* and Wes D. Pearce,
University of Regina

Carrie Colton, *Jacksonville State University*
Michelle M. Dowd, *University of Alabama*
Emily Lauren Duncan, *Calhoun
County Chamber Foundation*
Megan E. Griffin, *Case Western
Reserve University*
John C. Higgins, *Case Western
Reserve University*
Melissa M. Johnson, *University of Minnesota*
Emelye Keyser, *University of Virginia*
Kelly Neil, *Spartanburg Methodist College*
Kevin A. Quarmby, *College of St. Scholastica*
Tracey Sedinger, *University of
Northern Colorado*
Kimberly R. West, *Cumberland
School of Law*
Hana Worthen, *Barnard College,
Columbia University*

**Seminar: Race: Comparative
and Transnational Approaches**
Meeting Room 8

LEADERS: Noémie Ndiaye, *Carnegie
Mellon University* and Emily
Weissbourd, *Lehigh University*

Katharine Addis, *New York University*
Abdulhamit Arvas, *University of
California, Santa Barbara*
Matthieu A. Chapman, *University of Houston*
Mayra Alejandra Cortes, *University
of California, San Diego*
Graham Keith Gregor, *Universidad de Murcia*
Robert Hornback, *Oglethorpe University*
Stephen Kim, *Cornell University*
V. K. Preston, *University of Toronto*
Rachana Sachdev, *Susquehanna University*
Jyotsna G. Singh, *Michigan State University*
Jennifer Linhart Wood, *Folger
Shakespeare Library*
Corinne M. Zeman, *Washington
University in St. Louis*

**Seminar: Shakespeare and
“Minor” Dramatists**
Meeting Room 9

LEADERS: David McInnis,
University of Melbourne and Tom
Rutter, *University of Sheffield*

Douglas H. Arrell, *University of Winnipeg*
James P. Bednarz, *Long Island University*
Hugh Craig, *University of
Newcastle, Australia*
Elizabeth A. Hutcheon, *Huntingdon College*
Bronwyn Johnston, *London, UK*
Andy Kesson, *Roehampton University*
M. J. Kidnie, *Western University*
Roslyn L. Knutson, *University of
Arkansas, Little Rock*
William J. Lloyd, *Damascus, MD*
Tracey Miller-Tomlinson, *New
Mexico State University*
Eoin Price, *Swansea University*
Julianne Sandberg, *Samford University*
Robert Stagg, *University of Oxford*

Seminar: Shakespeare at Scale
Meeting Room 12

LEADERS: Anupam Basu, *Washington
University in St. Louis* and Brett D.
Greatley-Hirsch, *University of Leeds*

Paul Brown, *De Montfort University*
Douglas Bruster, *University of Texas, Austin*
Jason Elliot Cohen, *Berea College*
Mark James Dahlquist, *Miami University*
Mel Evans, *University of Leicester*
Jonathan Robert Hope, *Arizona
State University*
Jakob Ladegaard, *Aarhus Universitet*
Nova Myhill, *New College of Florida*
Edward Pechter, *University of Victoria*
Carl G. Stahmer, *University
of California, Davis*
Elizabeth E. Tavares, *Pacific University*
Christopher Warren, *Carnegie
Mellon University*

Seminar: Shakespearean Revulsions

Meeting Room 16

LEADER: Claire McEachern, University of California, Los Angeles

Cristina León Alfar, *Hunter College, CUNY*
 Judith H. Anderson, *Indiana University*
 David M. Bevington, *University of Chicago*
 Barbara Jane Bono, *University at Buffalo, SUNY*

Nicholas Ryan Helms, *University of Alabama*
 Bella Mirabella, *New York University*
 Harry Rex Newman, *Royal Holloway, University of London*

Milla Cozart Riggio, *Trinity College*
 Charlotte Scott, *Goldsmiths College London*
 David Carroll Simon, *University of Maryland, College Park*
 Joel Elliot Slotkin, *Towson University*
 Whitney Sperrazza, *University of Kansas*
 Mary Helen Truglia, *Indiana University*
 Andrea F. Van Nort, *United States Air Force Academy*

Seminar: Webster's The White Devil: New Directions

Meeting Room 15

LEADER: Lara Bovilsky, University of Oregon

Sally Barnden, *King's College London*
 Dympna C. Callaghan, *Syracuse University*
 Darlene Farabee, *University of South Dakota*
 David J. Gram, *Oakland University*
 John Kunat, *Sonoma State University*
 Subha Mukherji, *University of Cambridge*
 William Reginald Rampone, Jr., *South Carolina State University*
 Gabriel A. Rieger, *Concord University*
 Kayla Shearer, *University of Texas, Austin*
 Emma Whipday, *Newcastle University*

Digital Exhibits

Congressional Hall B/C

Jonson Character Cloud

Exhibitors: Dori Coblentz, *Georgia Institute of Technology* and David Coblentz, *Independent Scholar*

Mapping Absence in Shakespeare

Exhibitors: John Garrison and Ahon Gooptu, *Grinnell College*

The MIT Merchant Module

Exhibitors: Diana E. Henderson and Mary Erica Zimmer, *Massachusetts Institute of Technology*

Shakespeare at Play

Exhibitor: Noam Tzvi Lior, *University of Toronto*

To Quote or Not to Quote, or Fractal Shakespeare

Exhibitor: Derek Miller, *Harvard University*



Performance Workshop Arden/Everywhere Mount Vernon A

Presented by Jessica Bauman

Using *As You Like It* as a model, New York theater director Jessica Bauman will explore how theater and performance techniques can provide pedagogical tools for creating an inclusive classroom. This workshop will include on-your-foot theater games and exercises, and personal writing prompts that connect to the plays' themes. Finally, we will explore strategies for embodying Shakespeare's verse with apprehensive students.



4:30 to 5:30 p.m.

Drinks Reception

Edinburgh Critical Studies in Shakespeare and Philosophy
Congressional Hall B/C

Hosted by Michelle Houston, Edinburgh University Press and Kevin Curran, *Université of Lausanne*

Open to all registrants.

6:00 to 7:30 p.m.

Annual Reception

Grand Ballroom

Open to all registrants and their registered guests. Each guest must have an SAA name tag in order to attend; guest tags may be requested and purchased on the conference registration form.



UNIVERSITY OF
MARYLAND

Department of English

Early modern studies is a nationally recognized strength within the University of Maryland's large and dynamic English department. Located within easy reach of one of the world's richest archival environments, our campus is connected by Metro to the Folger Shakespeare Library, the Library of Congress, Dumbarton Oaks, and Smithsonian Institutions.

Graduate Programs

We offer full funding for PhD students, with interdisciplinary research opportunities through the Graduate Field Committee in Medieval and Renaissance Studies, the Maryland Institute for Technology in the Humanities, and Folger Institute seminars and academic programs.

Medieval and Renaissance Faculty

- Amanda Bailey
- Kent Cartwright
- Kimbery Coles
- Theresa Coletti
- Donna Hamilton, *emerita*
- Theodore Leinwand, *emeritus*
- Thomas Moser
- Gerard Passannante
- Kellie Robertson
- David Carroll Simon
- Scott Trudell
- Vessela Valiavitcharska



WELCOME

Shakespeare Association of America to Washington, DC

Please visit while you're here.

Reading Rooms

Saturday paging of vault materials for SAA

To learn more,

contact registrar@folger.edu or call 202-675-0306

On Exhibit

A Monument to Shakespeare:

The Architecture of the Folger Shakespeare Library

Mon - Sat, 10am - 5pm

Sun, Noon - 5pm

Shakespeare's Birthday Lecture

Gina Bloom

***Rough Magic: Performing Shakespeare
through Gaming Technology***

Mon, Apr 22, 7pm

FolgerSHAKESPEARE
LIBRARY *folger.edu*





FRIDAY, APRIL 19

7:30 to 8:00 a.m.

Shakespeare Yoga

Penn Quarter

Led by Kathryn M. Moncrief, RYT-200: Vinyasa-style yoga class with a Shakespeare-inspired playlist. All levels welcome; bring a mat, if possible.

8:00 a.m. to 6:00 p.m.

Registration

Grand Ballroom Foyer

Book Exhibits

Congressional Hall B/C

8:00 to 9:00 a.m.

**Trustees' Breakfast
for Graduate Students**

Renaissance Ballroom East

Open to all graduate student members.

9:00 to 10:30 a.m.

**Panel Session:
Rhetorics of Performance**

Grand North

SESSION ORGANIZER: Lucy Munro, King's College London

CHAIR: Farah Karim-Cooper, *Shakespeare's Globe*

Shakespeare, Gender, and the Performance of the "Commonplace"
Andrea R. Stevens, *University of Illinois, Urbana-Champaign*

Feats of Activity and the Tragic Stage
Clare McManus, *University of Roehampton*

Entertainment in the Periphery
Patricia Akhimie, *Rutgers University, Newark*

"Incite them to quick motion": Kinetic Rhetoric of Colonial Subaltern Performance in *The Tempest's* Disrupted Masque
Elisa Oh, *Howard University*

Silent Voices: Text, Performance and the Early Modern Dumb-Show
Lucy Munro, *King's College London*

**Panel Session: From Theory
to Data and Back**
Grand South

SESSION ORGANIZER: Jonathan P. Lamb, *University of Kansas*

CHAIR: Hugh Craig, *University of Newcastle, Australia*

What's at Stake in Quantitative Studies about Shakespeare?
Gabriel Egan, *De Montfort University*

Shakespeare in the *London Stage Database*
Mattie Burkert, *Utah State University*

Death by Numbers: Quantitatively Analyzing the London Bills of Mortality
Jessica Otis, *George Mason University*

Computational Philology
Jonathan P. Lamb, *University of Kansas*

10:30 to 11:00 a.m.

Coffee Break

Grand Ballroom Foyer

11:00 a.m. to 12:30 p.m.

**General Meeting for Members of
the International Shakespeare
Association**
Renaissance B

11:00 a.m. to 1:00 p.m.

**Seminar: Art-Religion in
Shakespeare**
Meeting Room 6

LEADER: John L. Parker, *University of Virginia*

Gabriel Zenon Bloomfield,
Columbia University
John Charles Estabill, *Records of
Early English Drama (REED)*
James Funk, *Clemson University*
Daniel R. Gibbons, *Catholic
University of America*
Tara Gildea, *Rutgers University*
Peter T. Hadorn, *University of
Wisconsin, Platteville*
Lindsey Larre, *Duke University*
Holly Crawford Pickett, *Washington
and Lee University*
Matthew Rinkevich, *University of Delaware*
Grace C. Tiffany, *Western
Michigan University*
Maggie Vinter, *Case Western
Reserve University*
Gretchen York, *University of Virginia*

**Seminar: Disability and Its
Intersections**
Meeting Room 4

**LEADERS: Allison P. Hobgood,
Willamette University and Jonathan
Hsy, George Washington University**

Royce Best, *Johns Hopkins University*
Seeta Chaganti, *University
of California, Davis*
Rachel Ellen Clark, *Wartburg College*
Amrita Dhar, *Ohio State University*
Alice Equestri, *University of Sussex*
Sonya Freeman Loftis, *Morehouse College*
Ari Friedlander, *University of Mississippi*
Melissa Hull Geil, *University
of North Carolina*
Richard Godden, *Louisiana State University*
Amanda M. Lehr, *Vanderbilt University*
Emily L. Loney, *University of
Wisconsin, Madison*
Mardy Philippian, *Lewis University*
Jennifer Row, *University of Minnesota*
Lindsey Row-Heyveld, *Luther College*
Justin P. Shaw, *Emory University*
Andrew Clark Wagner, *University
of California, Los Angeles*

**Seminar: Invisible Presences:
Detecting the Unseen in
Renaissance Drama**
Meeting Room 16

**LEADERS: Andrew Sofer, Boston
College and Jonathan A. Walker,
Portland State University**

Clara Biesel, *University of Minnesota*
Heidi Brayman, *University of
California, Riverside*
William Casey Caldwell,
Northwestern University
Darryl Chalk, *University of
Southern Queensland*
Lauren Eriks Cline, *University of Michigan*
Jennifer Hardy, *King's College London*
Wendy Beth Hyman, *Oberlin College*
Peter Kirwan, *University of Nottingham*
Erika T. Lin, *Graduate Center, CUNY*
Bernice M. Neal, *Toronto, ON*
Robert B. Pierce, *Oberlin College*
Sarah Sands Rice, *University
of California, Berkeley*
Katherine Nicole Walker, *University
of North Carolina*
Travis D. Williams, *University of Rhode Island*
W. B. Worthen, *Barnard College*
Amanda Zoch, *Colorado State University*

**Seminar: Modern Scholarly
Editions: Challenges and
Opportunities**
Meeting Room 5

**LEADERS: Martin Butler, University
of Leeds and Jennifer Richards,
Newcastle University**

Brandi Kristine Adams, *University of Maryland*
Kristen Abbott Bennett, *Framingham
State University*
Francis X. Connor, *Wichita State University*
Ian H. De Jong, *University of Nevada, Reno*
Suzanne Gossett, *Loyola University Chicago*
Mark Charles Hulse, *University of Alabama*
András Kiséry, *City College of New York, CUNY*
Joseph Penczak, *Troupe of Friends*
Jonah Kent Richards, *University
at Albany, SUNY*
Alan Stewart, *Columbia University*
Gary L. Taylor, *Florida State University*
Ann Thompson, *King's College London*



**Seminar: Occult Agents
in Shakespeare, Part Two**
Meeting Room 3

LEADER: *Mary Floyd-Wilson,
University of North Carolina*

*Charlotte Artese Agnes, Scott College
Pompa Banerjee, University
of Colorado, Denver
Kent Cartwright, University of Maryland
Jeremy Wayne Cornelius,
Louisiana State University
Emily Carole George, University
of Washington
Stephanie Howieson, Longwood University
Katie Kadue, University of Chicago
Aaron Wells Kitch, Bowdoin College
Justin Barnes Kolb, American
University in Cairo
Laura E. Levine, New York University
Melissa Pullara, Carleton University
Katy Reedy, Lake Forest College
Courtney Naum Scuro, University
of California, Riverside
Christina M. Squitieri, New York University*

Seminar: #OpenSecrets
Meeting Room 7

LEADERS: *Marjorie Rubright, University
of Massachusetts, Amherst and Kathryn
Vomero Santos, Trinity University*

*Deann Armstrong, Vanderbilt University
Ariane Marie Balizet, Texas
Christian University
Alexandra Carter, Tufts University
Kerry N. Cooke, Mary Baldwin University
Jenna Dreier, University of Minnesota
Mary Learner, University of North Carolina
Jasmine S. Lellock, Newton
South High School
Jessica McCall, Delaware Valley University
Emer Ann McHugh, National
University of Ireland, Galway
Thomas J. Moretti, Iona College
Paige M. Reynolds, University
of Central Arkansas
Marsha S. Robinson, Clinton, WA
Charlene V. Smith, Alexandria, VA
Kathleen Kalpin Smith, University
of South Carolina, Aiken*

**Seminar: Pleasure and
Interpretation in Shakespeare
and Spenser, Part Two**
Meeting Room 13

LEADERS: *Joe Moshenska,
University of Oxford and Leah J.
Whittington, Harvard University*

*Frederick Bengtsson, University of Kentucky
Brian P. Chalk, Manhattan College
Claire J. C. Eager, Colorado College
Katherine Eggert, University
of Colorado, Boulder
Patrick Gray, Durham University
David Landreth, University of
California, Berkeley
Alice Leonard, University of Oxford
Cassie Miura, University of
Washington, Tacoma
Catherine Nicholson, Yale University
William A. Oram, Smith College
Joseph M. Ortiz, University of Texas, El Paso
Colleen Ruth Rosenfeld, Pomona College
Kevin Joseph Windhauser,
Columbia University
Paul Joseph Zajac, McDaniel College*

Seminar: Provincial Shakespeare
Meeting Room 8

LEADERS: *Katherine A. Gillen, Texas A&M
University, San Antonio and Marissa
Greenberg, University of New Mexico*

*Hannah M. R. August, Massey University
Jonathan Burton, Whittier College
Andrew Carlson, Rutgers University
Michael Dobson, Shakespeare Institute,
University of Birmingham
Jeff Doty, University of North Texas
Ruben Espinosa, University of Texas, El Paso
Hyosik Hwang, Chungbuk
National University
Catherine Loomis, Rochester
Institute of Technology
Roderick H. McKeown, University of Toronto
Sandra Young, University of Cape Town*

Seminar: Race and/as Affect in Early Modern Literature
Meeting Room 9

LEADER: Carol Mejia LaPerle,
Wright State University

James E. Berg, *Middlebury College*
Dennis Austin Britton, *University of New Hampshire*

Drew Daniel, *Johns Hopkins University*
Averyl Dietering, *University of California, Davis*

Cora Fox, *Arizona State University*
Meghan Elizabeth Hall, *University of Pennsylvania*

Margo Hendricks, *University of California, Santa Cruz*

Mira Assaf Kafantaris, *Ohio State University*
Kirsten N. Mendoza, *University of Dayton*
Alicia Jordan Meyer, *University of Pennsylvania*

Mary K. Steible, *Southern Illinois University, Edwardsville*

Sydnee Wagner, *Graduate Center, CUNY*
Leslie Wexler, *University of Toronto*

Seminar: Shakespeare and Cultural Appropriation, Part Two
Meeting Room 11

LEADERS: Vanessa I. Corredera,
Andrews University and **Geoffrey Way,**
Washburn University

Sabina Amanbayeva, *Oklahoma City University*

Amy Bolis, *University of Minnesota*
Cristiane Busato Smith, *Arizona State University*

Anna Stegh Camati, *Centro Universitário Campos Andrade*
Elizabeth A. Charlebois, *St. Mary's College of Maryland*

Mail Marques De Azevedo, *Centro Universitário Campos de Andrade*

Leticia Concepción García, *Emerson College*
Ronan James Hatfull, *University of Warwick*

Natalia N. Khomenko, *York University*
Liana de Camargo Leão, *Universidade Federal do Paraná*

Caroline Lion, *Shakespeare Institute, University of Birmingham*

Lawrence Manley, *Yale University*
Elizabeth J. Rivlin, *Clemson University*
Katherine Romack, *University of West Florida*

Seminar: Shakespeare and the District
Meeting Room 1

LEADERS: Richard Finkelstein, *University of Mary Washington* and **Maya Mathur,**
University of Mary Washington

Christie Jane Carson, *Royal Holloway, University of London*

Amy Scott-Douglass, *Marymount University*
Alden T. Vaughan, *Columbia University*
Virginia Mason Vaughan, *Clark University*

Seminar: Shakespeare and Visual Cultures, Old and New
Meeting Room 15

LEADERS: Howard Marchitello,
Rutgers University, Camden and
Stephen Orgel, *Stanford University*

Katherine Acheson, *University of Waterloo*
Anna Riehl Bertolet, *Auburn University*
Brandon Christopher, *University of Winnipeg*
Alice A. Dailey, *Villanova University*
Louise Geddes, *Adelphi University*
William Germano, *Cooper Union*
Donald Hedrick, *Kansas State University*
Sujata Iyengar, *University of Georgia*
Frederick Paul Kiefer, *University of Arizona*
Jennifer Low, *Florida Atlantic University*
Karla Oeler, *Stanford University*
Goran V. Stanivukovic, *St. Mary's University*

Workshop: Shakespeare on Our Hands
Meeting Room 2

LEADERS, Jill Bradbury, *Gallaudet University,* **Crom Saunders,** *Columbia College Chicago,* **Ethan Sinnott,** *Gallaudet University,* and **Lindsey D. Snyder,** *Silver Spring, MD*

Sheila T. Cavanagh, *Emory University*
Leslie C. Dunn, *Vassar College*
Liz Fox, *University of Massachusetts, Amherst*
Jessica C. Murphy, *University of Texas, Dallas*



Sarah Neville, *Ohio State University*
Peter Novak, *University of San Francisco*
Ryan Singh Paul, *Texas A&M University, Kingsville*
Kendrick W. Prewitt, *University of West Alabama*
Catherine E. Thomas, *Georgia Gwinnett College*

Seminar: Shakespeare's Forms, Part One
Meeting Room 10

LEADERS: Emily Shortslef, *University of Kentucky* and Erin K. Kelly, *California State University, Chico*

Loren Cressler, *University of Texas, Austin*
Liam Thomas Daley, *University of Maryland*
Allison Kay Deutermann, *Baruch College, CUNY*
Derek Dunne, *Cardiff University*
Jennifer Higginbotham, *Ohio State University*
Matthew Hunter, *Texas Tech University*
Christine E. Hutchins, *Hostos Community College, CUNY*
Laura E. Kolb, *Baruch College, CUNY*
Kent Lehnhof, *Chapman University*
David Nee, *Harvard University*
Richard O'Brien, *Birmingham, UK*
Megan Snell, *University of Texas, Austin*
Michael M. Wagoner, *Florida State University*

Seminar: Shakespeare's Language: Changing Methods
Lafayette

LEADERS: Alysia Kolentsis, *St. Jerome's University, University of Waterloo* and Lynne Magnusson, *University of Toronto*

Ross M. Knecht, *Emory University*
Julian Lamb, *Chinese University of Hong Kong*
Russell McConnell, *Southern Methodist University*
Nick Moschovakis, *Bethesda, MD*
Benedict S. Robinson, *Stony Brook University*
Daniel Allen Shore, *Georgetown University*
Kyle Sebastian Vitale, *Yale University*
Jennifer Waldron, *University of Pittsburgh*

Seminar: Shakespearean Skies: Weather and Climate
Meeting Room 12

LEADERS: Sophie Chiari, *Université Clermont Auvergne* and Sophie Lemercier-Goddard, *ENS Université de Lyon*

Piers Brown, *Kenyon College*
John Douglas Gillies, *University of Essex*
Christine Hoffmann, *West Virginia University*
William Miles Lee, *United States Air Force Academy*

Seminar: Theatrical Skepticism
Mount Vernon B

LEADERS: Lauren Robertson, *Columbia University* and Anita Gilman Sherman, *American University*

Christopher Crosbie, *North Carolina State University*
Robert F. Darcy, *University of Nebraska, Omaha*
Hillary Eklund, *Loyola University New Orleans*
Lars Engle, *University of Tulsa*
Brett Gamboa, *Dartmouth College*
Jonas Gardsby, *University of Minnesota*
Ani Govjian, *University of North Carolina*
Nicole Hagstrom-Schmidt, *Texas A&M University*
Kristine Johanson, *University of Amsterdam*
Marc Jason Juberg, *University of Minnesota, Twin Cities*
Dennis Kezar, *University of Utah*
James Kuzner, *Brown University*
Kelly Lehtonen, *The King's College*
Shiladitya Sen, *Montclair State University*
Michelle Zerba, *Louisiana State University*

Seminar: World, Globe, Planet: Macrocoscopic Thinking in the Age of Shakespeare
Mount Vernon A

LEADERS: Joseph Campana, *Rice University* and Ayesha Ramachandran, *Yale University*

Crystal Bartolovich, *Syracuse University*
Joseph Bowling, *University of Wisconsin, Madison*

Devin L. Byker, *College of Charleston*
 Douglas Iain Clark, *University of Manchester*
 Brent Dawson, *University of Oregon*
 Mary C. Fuller, *Massachusetts
 Institute of Technology*
 Jeffrey Blaine Griswold,
University of Maryland
 Gavin Hollis, *Hunter College, CUNY*
 Nicole A. Jacobs, *California
 Polytechnic State University*
 Radhika Koul, *Stanford University*
 Katarzyna Lecky, *Bucknell University*
 Debapriya Sarkar, *University of Connecticut*
 Steven Swarbrick, *Baruch College, CUNY*

**Workshop: Writing about
 Shakespeare and Early Modern
 Drama for a Broader Public
 Carnegie**

**LEADER: Daniel Thomas Swift,
 New College of the Humanities**

Mara I. Amster, *Randolph College*
 Michael J. Collins, *Georgetown University*
 Jason Crawford, *Union University*
 Erin Kathleen Kelly, *Rutgers University*
 Cynthia Lewis, *Davidson College*
 Tanya Pollard, *Brooklyn College, CUNY*
 Jonathan Shelley, *Georgia
 Institute of Technology*
 Andrew McConnell Stott, *University
 of Southern California*
 Paul Yachnin, *McGill University*

**Digital Exhibits
 Congressional Hall B/C**

**Cooking in the Archives: Updating
 Early Modern Recipes (1600-
 1800) in a Modern Kitchen**
 Exhibitor: Marissa Nicosia, *Pennsylvania
 State University, Abington College*

**Digital Cavendish Project - A
 Collaborative Scholarly Repository**
 Exhibitor: Shawn William Moore, *Florida
 Southwestern State College*

**Digital Tools for Teaching
 Shakespeare: Offerings from the
 Folger Shakespeare Library**
 Exhibitors: Meaghan J. Brown, *Folger
 Shakespeare Library*, Justine Decamillis,
University of Maryland, Eric M. Johnson,
Folger Shakespeare Library, and Rebecca
 Lee Niles, *Folger Shakespeare Library*

The EMC Imprint from UCSB
 Exhibitors: Andrew Griffin, *University
 of California, Santa Barbara* and
 Patricia Fumerton, *University of
 California, Santa Barbara*

The Hurlly Burly Shakespeare Show!
 Exhibitors: Jess Hamlet, *University
 of Alabama* and Aubrey Whitlock,
American Shakespeare Center

**Performance Workshop:
 Arden of Faversham
 Renaissance B**

**Presented by Ralph Alan Cohen,
 American Shakespeare Center**

Join ASC actors and Ralph Alan Cohen in an exploration of performance choices in *Arden of Faversham*. ASC actors will perform selected scenes, discuss their process, and invite you, the participant to apply the principles used in the rehearsal rooms and performance spaces of the ASC, including embedded stage directions, pronoun choices, character address, and audience contact in re-directs. Workshop participants will make artistic choices and direct the ASC actors in a scene from our recent Winter Season: *The Actors' Renaissance*.

1:30 to 3:30 p.m.

**Annual Luncheon
 Grand Ballroom**

Open to all registrants for the Forty-Seventh Annual Meeting. Additional guest tickets may be purchased in advance.



3:30 to 5:00 p.m.

Plenary Session:
Looking Forward:
New Directions in
Early Modern Race Studies
Renaissance Ballroom

SESSION ORGANIZER: Peter
Erickson, Northwestern University

CHAIR: Ayanna Thompson,
Arizona State University

What Is at Stake in the Study of Race?
Ania Loomba, *University of Pennsylvania*

“A Swarthy Group of Strangers”:
Shakespeare, Islamophobia, and Race
Bernadette Andrea, *University of*
California, Santa Barbara

White Hands: Gesturing toward
Shakespeare’s “Other Race Plays”
David Sterling Brown, *SUNY Binghamton*

I Can’t Love You the Way You Want
Me To: Archival Blackness
Kim F. Hall, *Barnard College*

5:15 to 7:00 p.m.

Scholars of Color Social and Cash Bar
Grand Ballroom North
Co-sponsored by the Folger
Shakespeare Library
Open to registrants and their guests.

7:30 to 9:30 p.m.

Performance: The Dramatic
Exploits of Edmund Kean
Renaissance West

Presented by Ian Hughes
Sponsored by the Shakespeare Bulletin

Written and performed by Award-winning Royal Shakespeare Company actor Ian Hughes, *The Dramatic Exploits of Edmund Kean* is a riveting solo-performance which vividly portrays the life of one of the most extraordinary English actors from the Regency period. Edmund Kean (1787-1833), in a relatively short period, progressed from a life of abject poverty and deprivation as a strolling player walking, quite literally, from town to town to being hailed as one of the greatest actors and interpreters of Shakespeare the country has ever produced.





Master of Arts in

ENGLISH

- **36 hours:** Tailor your program by selecting from courses in literature, cultural studies, linguistics, critical theory, digital humanities, research methods, and composition.
- **3:1 Student-Faculty Ratio:** Experience individualized attention from award-winning research active faculty.
- **Interdisciplinary Study:** Interact with students and scholars from areas such as philosophy, history, africana studies, women & gender studies, and sociology.
- **Fully-Funded GTA Stipends:** Receive tuition waivers, travel funding, and valuable teaching experience.

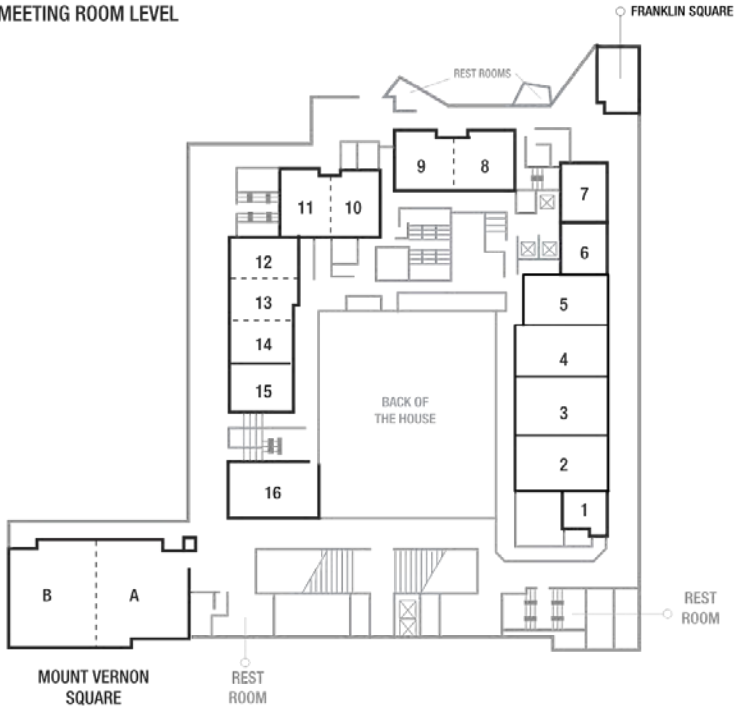
For information, contact program director Gena Chandler-Smith (gechandl@vt.edu) or visit <https://liberalarts.vt.edu/departments-and-schools/department-of-english/academic-programs/master-of-arts-in-english.html>



47TH ANNUAL MEETING

Shakespeare Association of America

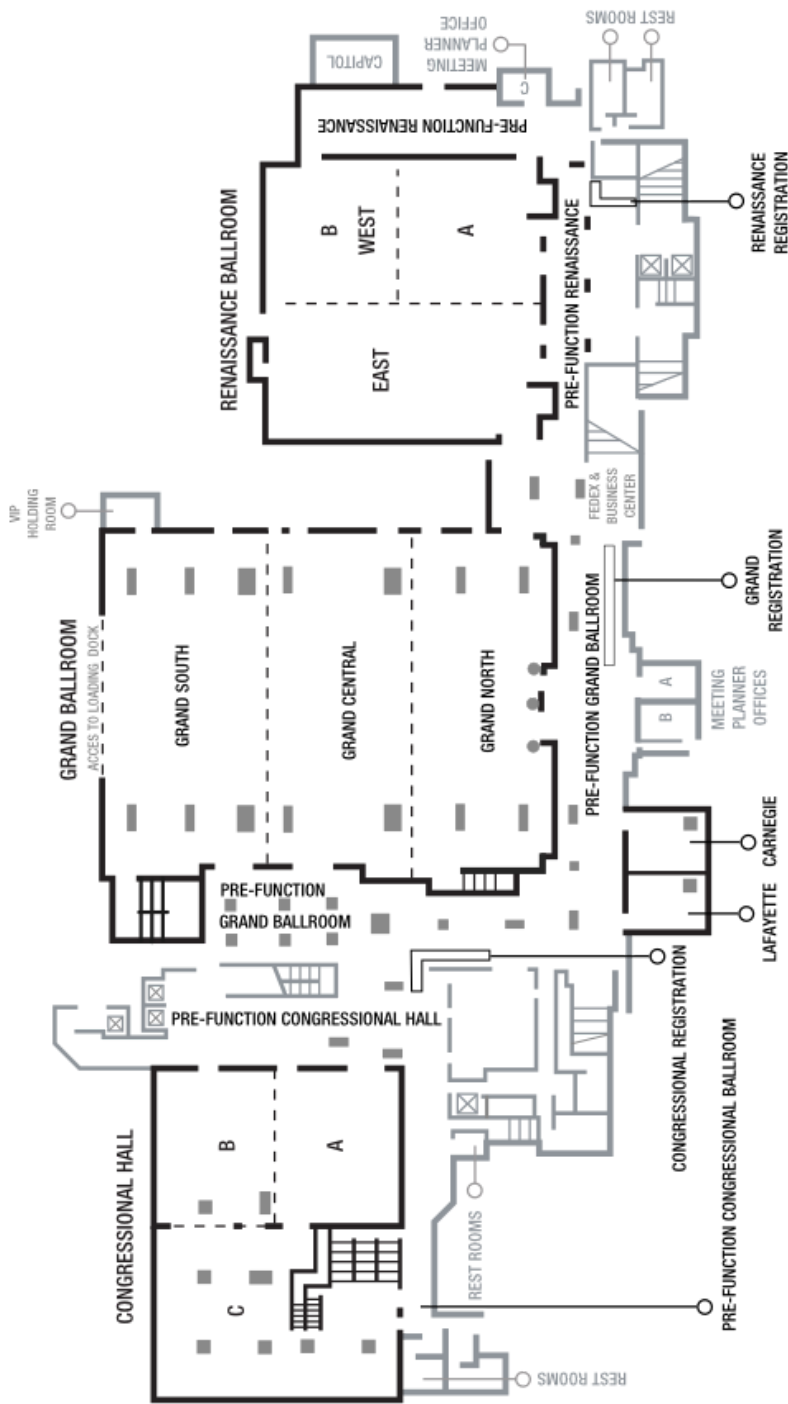
MEETING ROOM LEVEL



LOBBY LEVEL

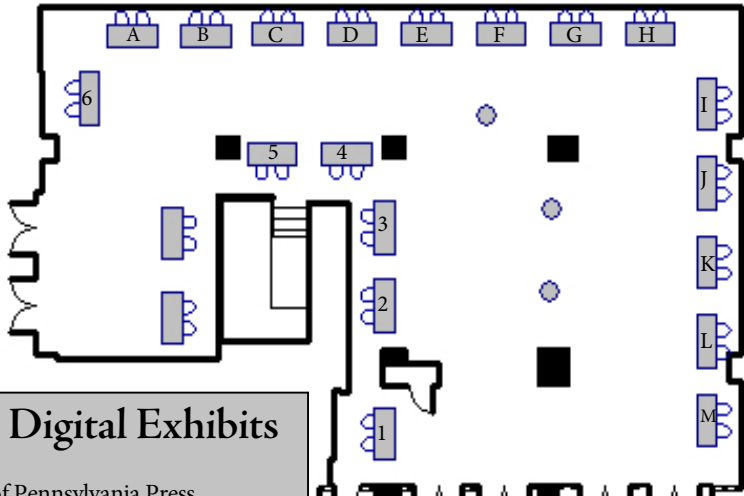


BALLROOM LEVEL



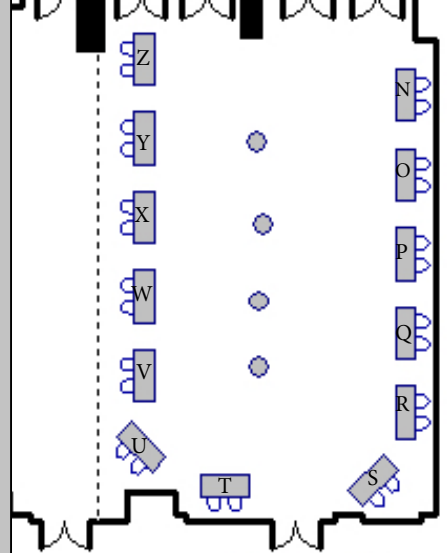


Congressional C



Book and Digital Exhibits

- A-B University of Pennsylvania Press
- C-D Manchester University Press
- E ACMRS
- F-H Bloomsbury Academic
- I-M Digital Exhibits
- N-O Palgrave Macmillan
- P LEMDO / DRE / MoEML / ISE / QME
- Q Shakespeare Inc.
- R-S Oxford University Press
- T-U Edinburgh University Press
- V Shakespeare at Notre Dame
- W-Z Cambridge University Press
- 1 Good Tickle Brain
- 2-3 The Scholar's Choice
- 4 Mary Baldwin University Shakespeare and Performance and the American Shakespeare Center
- 5 Folger Shakespeare Library
- 6 University of Chicago Press



Congressional B

NEW FROM OXFORD

OXFORD SHAKESPEARE TOPICS

COMING SOON
**SHAKESPEARE AND
TEXT**
REVISED EDITION
John Jowett

**SHAKESPEARE AND
THE AFTERLIFE**
John S. Garrison

**SHAKESPEARE AND
LONDON**
Duncan Salkeld



**THE OXFORD
HANDBOOK OF
SHAKESPEAREAN
COMEDY**
EDITED BY Heather
Hirschfeld

**IMPOSSIBLE
DESIRE AND
THE LIMITS OF
KNOWLEDGE IN
RENAISSANCE
POETRY**
Wendy Beth
Hyman



**SHAKESPEARE'S
CONTAGIOUS
SYMPATHIES**
///
Communications
Eric Langley

**RUIN AND
REFORMATION
IN SPENSER,
SHAKESPEARE,
AND MARVELL**
Stewart Mottram



THE SONNET
Stephen Regan

**THE CHILD IN
SHAKESPEARE**
Charlotte Scott

**UNWRITTEN
POETRY**
*Song,
Performance, and
Media in Early
Modern England*
Scott A. Trudell



THE NEW OXFORD
SHAKESPEARE

ONLINE PRODUCTS

Oxford Scholarly Editions Online
www.oxfordscholarlyeditions.com

Oxford Scholarship Online
www.oxfordscholarship.com

Oxford Handbooks Online
www.oxfordhandbooks.com

ILLUMINATING
Shakespeare

Explore Shakespeare theme by theme
global.oup.com/shakespeare

NEW IN PAPERBACK

SHAKESPEARE | CUT
*Rethinking cutwork in an age
of distraction*
Bruce R. Smith

**SHAKESPEARE, COURT
DRAMATIST**
Richard Dutton

**THE OXFORD HANDBOOK OF
THE AGE OF SHAKESPEARE**
EDITED BY R. Malcolm Smuts

HAMLET'S MOMENT
*Drama and Political Knowledge
in Early Modern England*
András Kiséry

VISIT THE OUP BOOTH FOR
30% DISCOUNT ON THESE
TITLES AND MORE!

OXFORD
UNIVERSITY PRESS



SATURDAY, APRIL 20

7:30 to 8:00 a.m.

Shakespeare Yoga

Penn Quarter

Led by Anna Riehl Bertolet, RYT-200: Vinyasa-style yoga class with a Shakespeare-inspired playlist. All levels welcome; bring a mat, if possible.

8:00 a.m. to 12:00 noon

Information

Grand Ballroom Foyer

Book Exhibits

Congressional Hall B/C

8:30 to 10:30 a.m.

Workshop for Teachers

Mount Vernon

Led by Sarah Enloe, *American Shakespeare Center*

9:00 to 10:30 a.m.

Roundtable: Citizen Shakespeare

Grand South

SESSION ORGANIZER: Katherine West Scheil, *University of Minnesota*

MODERATOR: Paul Edmondson, *Shakespeare Birthplace Trust*

Zorica Bečanović Nikolić, *Univerzitet u Beogradu*

Ewan Fernie, *Shakespeare Institute, University of Birmingham*

Michael Witmore, *Folger Shakespeare Library*

Roundtable: Wherefore Ecofeminism?

Grand North

SESSION ORGANIZER: Jennifer A. Munroe, *University of North Carolina, Charlotte*

CHAIR: Tiffany Jo Werth, *University of California, Davis*

Carla Freccero, *University of California, Santa Cruz*

Evelyn Gajowski, *University of Nevada, Las Vegas*

Rebecca Laroche, *University of Colorado, Colorado Springs*

Steve Mentz, *St. John's University*

Jennifer A. Munroe, *University of North Carolina, Charlotte*

10:30 to 11:00 a.m.

Coffee Break

Grand Ballroom Foyer

11:00 to 12:30 a.m.

Panel Session: The 2019

NextGenPlen

Renaissance Ballroom

SESSION ORGANIZERS: Members of the NextGenPlen Committee for 2019

CHAIR: Katherine Rowe, *College of William & Mary*

"Mark how he trembles in his ecstasy": Space, Place, and Self in *The Comedy of Errors*

Jennifer J. Edwards, *Shakespeare's Globe*

The Sex Lives of Shakespearean Women
Joseph Gamble, *University of Michigan*

Cosmopolitan Windsor: Translation and Seduction in Shakespeare's "English" Comedy

Andrew S. Keener, *Santa Clara University*

"I Had as Lief They Would Break Wind in My Lips": Contested Kisses in Marston's *The Dutch Courtesan*

Alex MacConochie, *Boston University*

Puppet Theater and the Interpreter's Role
Nicole Sheriko, *Rutgers University*

12:30 to 2:00 p.m.

Roundtable: The Economics of Shakespeare Publishing

Grand North

SESSION ORGANIZER AND CHAIR: Eric M. Johnson, *Folger Shakespeare Library*

Fitting the Bill: Publishing Shakespeare Successfully for Today's Students, Scholars and Performers

Margaret Bartley, *Bloomsbury Publishing*

Unlocking the Black Box of the Academic Journal

Jessica Roberts Frazier, *Folger Shakespeare Library*

Metadata Misfires and

Bibliographical Chaos in the Shakespeare Publication Market

Susan V. Scott, *London School of Economics*

2:00 to 3:30 p.m.

Panel Session: Practice and Process in Early Modern Poetics

Grand North

SESSION ORGANIZERS: Megan Heffernan, *DePaul University* and Jessica Rosenberg, *University of Miami*

CHAIR: Dympna C. Callaghan, *Syracuse University*

Stationers' Forms

Megan Heffernan, *DePaul University*

Fast and Loose: Limit and Liberty in Early Modern Prison Poetry

Molly Murray, *Columbia University*

Romeo and Juliet and the Traffic in Small Things

Jessica Rosenberg, *University of Miami*

Hester Pulter's Dunghill Poetics

Frances E. Dolan, *University of California, Davis*

Panel Session: Shakespearean Futures: Shakespeare and a Living Wage

Grand South

SESSION ORGANIZER: Amanda Bailey, *University of Maryland*

CHAIR: Carla Della Gatta, *University of Southern California*

"By penny of observation": Teaching Shakespeare as Contingent Faculty

Maggie Ellen Ray, *Prince George's County Public Schools*

Contingency, Gen. Ed., and the Age of Shakespeare

Sabrina Alcorn Baron, *University of Maryland*

Shakespeare and the Boundaries of the Humane

Amanda Bailey, *University of Maryland*

4:00 to 6:00 p.m.

Workshop: Editing Editing

Meeting Room 12

LEADER: Leah Knight, *Brock University*

Liza Blake, *University of Toronto*

Kurt Daw, *San Francisco State University*

Jeremy Ehrlich, *Internet*

Shakespeare Editions

Elizabeth Zeman Kolkovich,

Ohio State University

Melanie Catherine Lo, *University*

of Colorado, Boulder

Maria Teresa Prendergast,

College of Wooster

Danielle Rosvally, *University at Buffalo, SUNY*

Paul Salzman, *La Trobe University*

Olga L. Valbuena, *Wake Forest University*

Stephen Wittek, *Carnegie Mellon University*



**Seminar: Navigating Early
Modern Interfaces**

Capitol Room

LEADER: Meaghan J. Brown,
Folger Shakespeare Library

Paul Babin, *Northeastern University*
Elizabeth Corbett-Nicholson,
Folger Shakespeare Library
Lianne Habinek, *Bard College*
Noam Tzvi Lior, *University of Toronto*
Rebecca Munson, *Princeton University*
M. Stephanie Murray, *Carnegie
Mellon University*
Rebecca Lee Niles, *Folger
Shakespeare Library*
Lauren Shohet, *Villanova University*
Clifford Werier, *Mount Royal University*

**Seminar: Performing Women/
Performing Gender in the Age
of Shakespeare and Beyond**

Meeting Room 4

LEADER: Melinda Gough,
McMaster University

David J. Amelang, *Freie Universität Berlin*
Hailey Bachrach, *King's College London*
Tara Bradley, *St. John's University*
Katelyn McCarthy, *University of Minnesota*
Susan O'Hara, *Georgian Court University*
Peter Alexander Parolin,
University of Wyoming
Natalia Pérez, *University of
Southern California*
Sarah C. E. Ross, *Victoria
University of Wellington*
Jessica Swain, *McMaster University*
Dorothy C. Vanderford, *University
of Nevada, Las Vegas*
Deanne Williams, *York University*

**Seminar: Print, Conservation,
and Waste**

Meeting Room 6

LEADERS: Sarah Wall-Randell,
Wellesley College and **Lina Perkins
Wilder, Connecticut College**

Erika Mary Boeckeler,
Northeastern University
Joshua Calhoun, *University of Wisconsin*
Sarah Case, *Harvard University*
Edwina Louise Christie, *School of
Advanced Study, University of London*
Heidi C. Craig, *Folger Shakespeare Library*
Lara Dodds, *Mississippi State University*
Mark David Farnsworth,
University of Nevada
Adam Halstrom, *University of Utah*
Lara D. Hansen, *University of Nevada, Reno*
Helen Hull, *Queens University of Charlotte*
Katherine Hunt, *University of Oxford*
Sara Luttfriing, *Pennsylvania State Behrend*
Kyle A. Pivetti, *Norwich University*
Emily Elizabeth Rendek, *University
of South Carolina*
Anna Reynolds, *University of York*
Adam Smyth, *Balliol College, Oxford*

**Seminar: Refuge in
Shakespeare's Europe**

Meeting Room 5

**Sponsored by the European
Shakespeare Research Association**

**LEADER: Stephen O'Neill, National
University of Ireland, Maynooth**

Danielle Nicole Byington, *East
Tennessee State University*
Darlene Ciraulo, *University
of Central Missouri*
Stephen Cohen, *Central
Connecticut State University*
Tracy Clare Cummings, *San
Diego State University*
Kristin Denslow, *Southwestern
Adventist University*
Margaret Gisela Tudeau-Clayton,
Université de Neuchâtel
Ton Hoenselaars, *Universiteit Utrecht*

Avraham Oz, *University of Haifa & Academy of Performing Arts, Tel Aviv*
 L. Monique Pittman, *Andrews University*
 Anne Sophie Refskou, *University of Surrey, Guildford*
 David Ruiter, *University of Texas, El Paso*
 Robert Sawyer, *East Tennessee State University*
 Sara Francesca Soncini, *Università di Pisa*
 Benjamin Woodring, *Chicago, IL*

Seminar: Shakespeare in Film History
Meeting Room 15

LEADER: Gregory M. Colón Semenza, University of Connecticut, Storrs

Eric C. Brown, *University of Maine, Farmington*
 Stephen M. Buhler, *University of Nebraska*
 Catherine Grace Canino, *University of South Carolina, Upstate*
 Melissa Croteau, *California Baptist University*
 Don-John Dugas, *Kent State University*
 Scott A. Hollifield, *University of Nevada, Las Vegas*
 Courtney Lehmann, *University of the Pacific*
 Kendra Preston Leonard, *Silent Film Sound & Music Archive*
 Anthony Guy Patricia, *Concord University*
 Marguerite Rippey, *Marymount University*
 Amy Rodgers, *Mount Holyoke College*
 Garrett A. Sullivan, *Pennsylvania State University*
 Donna G. Young, *Oklahoma Baptist University*

Seminar: Shakespeare on the Contemporary Regional Stage
Meeting Room 13

LEADERS: Niamh J. O'Leary, Xavier University and Jayme M. Yeo, Belmont University

Regina Buccola, *Roosevelt University*
 Kevin Chovanec, *Christian Brothers University*
 Katharine Cleland, *Virginia Polytechnic Institute*

Douglas E. Green, *Augsburg University*
 David W. Hartwig, *Weber State University*
 Ariane Nada Helou, *University of California, Los Angeles*
 Ann M. Martinez, *Kent State University at Stark*
 Kate McPherson, *Utah Valley University*
 Allison Machlis Meyer, *Seattle University*
 Kathryn M. Moncrief, *Washington College*
 Bryan Daniel Nakawaki, *Purdue University*
 Robert Ormsby, *Memorial University of Newfoundland*
 Stephanie Pietros, *College of Mount St. Vincent*
 Michael W. Shurgot, *South Puget Sound Community College*
 William F. Wolfgang, *University of Warwick*

Seminar: Shakespeare, Race, and the Practical Humanities
Meeting Room 8

LEADER: Ian Smith, Lafayette College

Russ Bodi, *Owens College*
 John Casey, *Brown University*
 Benjamin Hilb, *Francis Marion University*
 Chelsea Leigh Horne, *American University*
 Fayaz Kabani, *Allen University*
 Joan Pong Linton, *Indiana University*
 Arthur L. Little, Jr., *University of California, Los Angeles*
 Natalie J. Loper, *University of Alabama*
 John Ray Proctor III, *Tulane University*
 Donovan H. Sherman, *Seton Hall University*
 Andrew Tumminia, *Spring Hill College*
 Deborah Uman, *St. John Fisher College*
 Charles Whitney, *University of Nevada, Las Vegas*

Seminar: Shakespeare the Documentary
Meeting Room 10

LEADER: Mark Thornton Burnett, Queen's University Belfast

Todd Landon Barnes, *Ramapo College of New Jersey*
 Terri Bourus, *Florida State University*
 Jim Casey, *Arcadia University*
 Eric L. De Barros, *University of the West Indies, St. Augustine*



Susanne Greenhalgh, *University of Roehampton*
Madiha Hannachi, *Université de Montréal*
Michael P. Jensen, *Shakespeare Newsletter*
Douglas M. Lanier, *University of New Hampshire*
Georgina M. Lucas, *University of Birmingham*
Laurie E. Osborne, *Colby College*
Adele Seeff, *University of Maryland*
Ramona Wray, *Queen's University Belfast*

Seminar: Shakespeare's Enemies
Meeting Room 7

LEADERS: Jeremy Lopez, University of Toronto and Paul D. Menzer, Mary Baldwin University

Matthew Charles Carter, *University of North Carolina, Greensboro*
Emily Griffiths Jones, *University of South Florida*
William R. Jones, *Murray State University*
John Ladd, *Washington University in St. Louis*
Eric S. Mallin, *University of Texas, Austin*
Zoltán Márkus, *Vassar College*
Kirk Melnikoff, *University of North Carolina, Charlotte*
Cyrus G. Mulready, *SUNY New Paltz*
Joseph Navitsky, *West Chester University*
Jeanette Nguyen, *Tran Drake University*
Richard M. Waugaman, *Georgetown University*

Seminar: Shakespeare's Forms, Part Two
Meeting Room 3

LEADERS: Emily Shortslef, University of Kentucky and Erin K. Kelly, California State University, Chico

J. Anthony Burton, *University of Massachusetts, Amherst*
Rana Choi, *University of Chicago*
Dori Coblentz, *Georgia Institute of Technology*
Claire M. Falck, *Rowan University*
Jeffrey Todd Knight, *University of Washington*

Laury Magnus, *United States Merchant Marine Academy*
Linda McJannet, *Bentley University*
Christopher Ross McKeen, *Renaissance Society of America*
Sharon O'Dair, *University of Alabama*
Ashley Sarpong, *University of California, Davis*
Rebecca Totaro, *Florida Gulf Coast University*
Maria Vrcek, *Rutgers University*
Seth S. Williams, *Barnard College*
Gillian Woods, *Birkbeck University of London*

Seminar: Shakespeare's Greek
Meeting Room 14

LEADERS: Andrew J. Fleck, University of Texas, El Paso and John Garrison, Grinnell College

Tom Bishop, *University of Auckland*
Larry Bonds, *McMurry University*
John Hugh Cameron, *St. Mary's University*
David Currell, *American University of Beirut*
Dustin Dixon, *Grinnell College*
Lynn Enterline, *Vanderbilt University*
Erich D. Freiburger, *Jacksonville University*
Jason Gleckman, *Chinese University of Hong Kong*
Jonathan Goossen, *Ambrose University*
Michael Anthony Ingham, *Lingnan University, Hong Kong*
Robert S. Miola, *Loyola University Maryland*
Su Fang Ng, *University of Oklahoma*
Curtis Perry, *University of Illinois, Urbana-Champaign*
Jane Raisch, *University of York*

Seminar: Signs of the Sexed Body in Early Modern Drama
Meeting Room 11

LEADER: Kimberly A. Coles, University of Maryland

Lilly Berbery, *University of North Carolina, Greensboro*
Julie A. Crawford, *Columbia University*
Claire Dawkins, *Stanford Online High School*
Tom Fish, *Oglethorpe University*

Judith Haber, *Tufts University*
Jess Hamlet, *University of Alabama*
Paul J. Hecht, *Purdue University Northwest*
Marina Leslie, *Northeastern University*
Ellen MacKay, *University of Chicago*
Julia Mix Barrington, *Boston University*
Jess R. Pfeffer, *Boston, MA*
Jan Stirm, *University of Wisconsin, Eau Claire*
Erin Weinberg, *Kingston, ON*

**Workshop: Teaching the
Premodern in a Time of White
Supremacy**

Meeting Room 16

LEADERS: Holly E. Dugan, *George Washington University*, Dorothy Kim, *Brandeis University*, and Reginald Alfred Wilburn, *University of New Hampshire*

Dana E. Aspinall, *Alma College*
Patricia Cahill, *Emory University*
Jean E. Howard, *Columbia University*
Melissa J. Jones, *Eastern Michigan University*
Nedda Mehdizadeh, *University of California, Los Angeles*
Scott O'Neil, *University of Rochester*
Bethany Packard, *Transylvania University*
Hannah Hessel Ratner, *Shakespeare Theatre*
Emma Maggie Solberg, *Bowdoin College*
Dustin Stegner, *California Polytechnic State University*
Dyani Johns Taff, *Ithaca College*
Mary Trull, *St. Olaf College*
H. Austin Whitver, *University of Alabama*
Laura Williamson-Ambrose, *St. Mary's College*

Washington and Lee University
is proud to support the

SHAKESPEARE ASSOCIATION
of AMERICA

for its important contributions to
the field of early modern studies and
its continuing role as a champion of the
humanities.

THE DEPARTMENT OF ENGLISH
THE PROGRAM IN MEDIEVAL AND RENAISSANCE STUDIES
THE OFFICE OF THE DEAN OF THE COLLEGE
THE OFFICE OF THE PROVOST

WASHINGTON AND LEE
UNIVERSITY

Lexington, Virginia



**Seminar: Tudor Performance:
Contexts, Traditions, Afterlives**
Meeting Room 2

LEADER: Jessica L. Winston,
Idaho State University

Catherine R. Clifford, *Graceland University*
Callan Davies, *University of Roehampton*
Alan C. Dessen, *University of North Carolina*
Ágnes Matuska, *Szegedi Tudományegyetem*
Kathryn Prince, *University of
Western Australia*
Nancy Selleck, *University of
Massachusetts, Lowell*
Andrew Sisson, *Williams College*

**Performance Workshop: What
Do Romeo and Juliet Really Look
Like?: Unconscious Bias through
a Shakespearean Lens**
Mount Vernon A

Presented by Ross Williams,
New York Shakespeare Exchange

NY Shakespeare Exchange is committed to generating passionate discussions about our modern world through the collective memory of Shakespeare. In this session, a cast of multiple, non-traditional Romeos and Juliets will explore scenes from Shakespeare's tragedy. The performance will be followed by a raucous Q&A with the artists about upturning expectations and breaking with tradition to share art more responsibly.

7:00 - 8:30 p.m.



Collection of the Supreme Court of the United States

**Discussion: A Conversation
with Supreme Court Justice
Stephen Breyer**
Grand South

Conducted by Michael Witmore,
Director of the Folger Shakespeare
Library. Q & A to follow.

10:00 p.m. to 1:00 a.m.

The Dance
Renaissance Ballroom

Sponsored by the SAA and
the Malone Society.

The Malone Society publishes editions of early printed and manuscript texts of plays, plus collections of documentary material relating to the performance and reception of early drama. Our most recent annual volume, distributed to all members, is a facsimile edition of the 1604 quarto of Marlowe's *Doctor Faustus*, edited by Chiaki Hanabusa. We also support scholarship through fellowships and research grants, prizes, symposia and a range of bibliographically inspired t-shirts. For details see malonesociety.com.

PARTICIPANTS | 47TH ANNUAL MEETING

Katherine Acheson, *University of Waterloo*
Faith Acker, *Northern Virginia*

Community College

Heather M. Ackerman, *Arizona State University*

Elizabeth V. Acosta, *El Paso*

Community College

Brandi Kristine Adams, *University of Maryland*

Mary Adams, *Western Carolina University*

Katharine Addis, *New York University*

Katie Adkison, *University of*

California, Santa Barbara

Patricia Akhimie, *Rutgers University, Newark*

Cristina León Alfar, *Hunter College, CUNY*

Sabina Amanbayeva, *Oklahoma City University*

David J. Amelang, *Freie Universität Berlin*

Mara I. Amster, *Randolph College*

Judith H. Anderson, *Indiana University*

Susan L. Anderson, *Sheffield Hallam University*

Bernadette Andrea, *University of*

California, Santa Barbara

Kirsty Andrews, *Edinburgh University Press*

Meghan C. Andrews, *Lycoming College*

Alicia Andrzejewski, *Graduate Center, CUNY*

Jessica Apolloni, *Christopher*

Newport University

Ronda Arab, *Simon Fraser University*

John Michael Archer, *New York University*

Deann Armstrong, *Vanderbilt University*

Lillie Arnott, *Queen's University Belfast*

Sharon Arnoult, *Midwestern State University*

Douglas H. Arrell, *University of Winnipeg*

Charlotte Artese, *Agnes Scott College*

Abdulhamit Arvas, *University of*

California, Santa Barbara

Dana E. Aspinall, *Alma College*

John H. Astington, *University of Toronto*

Tamara Atkin, *Queen Mary*

University of London

Katherine B. Attie, *Towson University*

Hannah M. R. August, *Massey University*

Aleida Auld, *Université de Genève*

Paul Babin, *Northeastern University*

Rebecca Ann Bach, *University of*

Alabama, Birmingham

Hailey Bachrach, *King's College London*

Patricia Badir, *University of British Columbia*

Stephanie Bahr, *Hamilton College*

Amanda Bailey, *University of Maryland*

Jonathan Baldo, *Eastman School of*

Music, University of Rochester

Rebekah Bale, *Institute for*

Tourism Studies, Macao

Ariane Marie Balizet, *Texas Christian University*

Elena Bandin, *Universidad de León*

Pompa Banerjee, *University*

of Colorado, Denver

Carla Baricz, *Hebrew University of Jerusalem*

Robertta Barker, *Dalhousie University*

Lisa M. Barksdale-Shaw, *Michigan*

State University

Andrew Barnaby, *University of Vermont*

Sally Barnden, *King's College London*

Todd Landon Barnes, *Ramapo*

College of New Jersey

Sabrina Alcorn Baron,

University of Maryland

Chris Barrett, *Louisiana State University*

Leeds Barroll, *Folger Shakespeare Library*

Anthony Gerard Barthelemy,

University of Miami

Margaret Bartley, *Bloomsbury Publishing*

Crystal Bartolovich, *Syracuse University*

Anupam Basu, *Washington*

University in St. Louis

Robin Bates, *University of Lynchburg*

Meredith Beales, *University of British Columbia*

Zorica Becanovic Bečanović Nikolić,

University of Belgrade

James P. Bednarz, *Long Island University*

Frederick Bengtsson, *University of Kentucky*

Kristen Abbott Bennett, *Framingham*

State University

Sean M. Benson, *University of Dubuque*

Lilly Berberyan, *University of North*

Carolina, Greensboro

Peter Berek, *Amherst College*

Dianne Elizabeth Berg, *Tufts University*

James E. Berg, *Middlebury College*

David M. Bergeron, *University of Kansas*

J. F. Bernard, *Champlain College*

Anna Riehl Bertolet, *Auburn University*

Benjamin Bertram, *University*

of Southern Maine

Royce Best, *Johns Hopkins University*

David M. Bevington, *University of Chicago*

Caralyn Bialo, *Manhattanville College*

Caroline Bicks, *University of Maine*

Clara Biesel, *University of Minnesota*

Roya Biggie, *Knox College*

Valerie Billing, *Central College*



47TH ANNUAL MEETING Shakespeare Association of America

- Laurel N. Billings, *University of Michigan*
Tom Bishop, *University of Auckland*
Petra Bjelica, *University of Verona*
Jennifer Black, *Boise State University*
Theo Black, *Cornell University*
Liza Blake, *University of Toronto*
Daniel Blank, *Harvard University*
Katherine Blankenau, *Northwestern University*
Gina Bloom, *University of California, Davis*
Gabriel Zenon Bloomfield, *Columbia University*
Russ Bodi, *Owens College*
Erika Mary Boeckeler, *Northeastern University*
Reme Bohlin, *University of Connecticut*
Amy Bolis, *University of Minnesota*
Larry Bonds, *McMurry University*
Barbara Jane Bono, *University at Buffalo, SUNY*
Rena Bood, *Universiteit van Amsterdam*
Todd Andrew Borlik, *University of Huddersfield*
Joyce Boro, *Université de Montréal*
Amy Michelle Borsuk, *Queen Mary University of London*
Anston Bosman, *Amherst College*
Keith M. Botelho, *Kennesaw State University*
Claire M. L. Bourne, *Pennsylvania State University*
Terri Bourus, *Florida State University*
Lara Bovilsky, *University of Oregon*
Claire Bowditch, *Loughborough University*
Robin Bower, *Pennsylvania State University*
Joseph Bowling, *University of Wisconsin, Madison*
Arlynda Boyer, *University of Toronto*
Jen Boyle, *Coastal Carolina University*
Nicola Boyle, *Harlaxton College, University of Evansville*
Andrew Bozio, *Skidmore College*
Jill Bradbury, *Gallaudet University*
Beatrice Bradley, *University of Chicago*
Tara Bradley, *St. John's University*
Heidi Brayman, *University of California, Riverside*
Eric Brinkman, *Ohio State University*
Dennis Austin Britton, *University of New Hampshire*
James M. Bromley, *Miami University*
Andrew S. Brown, *Yale University*
David Sterling Brown, *SUNY Binghamton*
Eric C. Brown, *University of Maine, Farmington*
Meaghan J. Brown, *Folger Shakespeare Library*
Pamela Allen Brown, *University of Connecticut, Stamford*
Paul Brown, *De Montfort University*
Piers Brown, *Kenyon College*
Douglas Bruster, *University of Texas, Austin*
Regina Buccola, *Roosevelt University*
Thea Buckley, *Queen's University Belfast*
Paul Budra, *Simon Fraser University*
Stephen M. Buhler, *University of Nebraska*
James C. Bulman, *Allegheny College*
Mattie Burkert, *Utah State University*
Mark Thornton Burnett, *Queen's University Belfast*
J. Anthony Burton, *University of Massachusetts, Amherst*
Jonathan Burton, *Whittier College*
Cristiane Busato Smith, *Arizona State University*
Rebecca Bushnell, *University of Pennsylvania*
Martin Butler, *University of Leeds*
Danielle Nicole Byington, *East Tennessee State University*
Devin L. Byker, *College of Charleston*
Sophie Rose Byvik, *Folger Shakespeare Library*
Patricia Cahill, *Emory University*
John Hugh Cameron, *St. Mary's University*
William Casey Caldwell, *Northwestern University*
Joshua Calhoun, *University of Wisconsin*
Dympna C. Callaghan, *Syracuse University*
Anna Stegh Camati, *Centro Universitário Campos Andrade*
Joseph Campana, *Rice University*
Catherine Grace Canino, *University of South Carolina, Upstate*
Walter W. Cannon, *Central College Iowa*
Andrew Carlson, *Rutgers University*
William C. Carroll, *Boston University*
Christie Jane Carson, *Royal Holloway, University of London*
Rob Carson, *Hobart and William Smith Colleges*
Thomas P. Cartelli, *Muhlenberg College*
Alexandra Carter, *Tufts University*
Matthew Charles Carter, *University of North Carolina, Greensboro*
Kent Cartwright, *University of Maryland*
Sarah Case, *Harvard University*
Jim Casey, *Arcadia University*
John Casey, *Brown University*
Sheila T. Cavanagh, *Emory University*
Mariacristina Cavecchi, *Università degli Studi di Milano*
Paul A. Cefalu, *Lafayette College*
Seeta Chaganti, *University of California, Davis*
Urvashi Chakravarty, *George Mason University*

THE GEORGE WASHINGTON UNIVERSITY DEPARTMENT OF ENGLISH



MASTER OF ARTS IN ENGLISH

Our MA program provides high-level training in literature and culture, preparing students for PhD work or a range of non-academic career possibilities. MA students are fully integrated with PhD students in the classroom and in our scholarly community.

LEARN MORE » [GO.GWU.EDU/ENGLISHMA](https://go.gwu.edu/englishma)

DOCTOR OF PHILOSOPHY IN ENGLISH

Our PhD program offers four research concentrations: Medieval and Early Modern Studies, British and Postcolonial Studies, American Literature and Culture, and Crip/Queer Studies. Our faculty are committed to close and collaborative engagement with our students' academic work.

LEARN MORE » [GO.GWU.EDU/ENGLISHPHD](https://go.gwu.edu/englishphd)

Our location in the heart of Washington, D.C., provides rich opportunities for scholarly research – from the Library of Congress to the National Archives to the Folger Shakespeare Library.

FALL ADMISSION

PhD: January 15
MA: February 1 (funding consideration); April 1

SPRING ADMISSION

MA: October 1

**Columbian College
of Arts & Sciences**

THE GEORGE WASHINGTON UNIVERSITY

The George Washington University does not unlawfully discriminate in its admissions programs against any person based on that person's race, color, religion, sex, national origin, age, disability, veteran status, sexual orientation, or gender identity or expression.



47TH ANNUAL MEETING Shakespeare Association of America

- Brian P. Chalk, *Manhattan College*
Darryl Chalk, *University of Southern Queensland*
Stephanie Chamberlain, *Southeast Missouri State University*
Alison A. Chapman, *University of Alabama, Birmingham*
Matthieu A. Chapman, *University of Houston*
Elizabeth A. Charlebois, *St. Mary's College of Maryland*
Zainab Cheema, *University of Texas, Austin*
Monica Chesnoiu-Matei, *Universitatea Ovidius din Constanta*
Simone Chess, *Wayne State University*
Sophie Chiari, *Université Clermont Auvergne*
Evan Choate, *Rice University*
Rana Choi, *University of Chicago*
Kevin Chovanec, *Christian Brothers University*
Ann C. Christensen, *University of Houston*
Margaret Christian, *Pennsylvania State University, Lehigh Valley*
Edwina Louise Christie, *School of Advanced Study, University of London*
Brandon Christopher, *University of Winnipeg*
Peter Robert Cibula, *University of California, Irvine*
Darlene Ciraulo, *University of Central Missouri*
Douglas Iain Clark, *University of Manchester*
Judith Petterson Clark, *Stephens College*
Rachel Ellen Clark, *Wartburg College*
Cyndia Susan Clegg, *Pepperdine University*
Katharine Cleland, *Virginia Polytechnic Institute*
Catherine R. Clifford, *Graceland University*
Dori Coblenz, *Georgia Institute of Technology*
Jason Elliot Cohen, *Berea College*
Stephen Cohen, *Central Connecticut State University*
Laura Cole, *The Atlanta Shakespeare Company*
Kimberly A. Coles, *University of Maryland*
Eleanor Collins, *Oxford University Press*
Michael J. Collins, *Georgetown University*
Carrie Colton, *Jacksonville State University*
Jason Comerford, *Shakespeare at Notre Dame*
Francis X. Connor, *Wichita State University*
Sara Coodin, *University of Oklahoma*
Hardy M. Cook, *Bowie State University*
Kerry N. Cooke, *Mary Baldwin University*
Amy Cooper, *United States Air Force Academy*
Elizabeth Corbett-Nicholson, *Folger Shakespeare Library*
Jeremy Wayne Cornelius, *Louisiana State University*
Vanessa I. Corredera, *Andrews University*
Taylor Corse, *Arizona State University*
Mayra Alejandra Cortes, *University of California, San Diego*
Sheila Coursey, *University of Michigan*
John D. Cox, *Hope College*
Heidi C. Craig, *Folger Shakespeare Library*
Hugh Craig, *University of Newcastle, Australia*
Jason Crawford, *Union University*
Julie A. Crawford, *Columbia University*
Hannah J. Crawforth, *King's College London*
Loren Cressler, *University of Texas, Austin*
Christopher Crosbie, *North Carolina State University*
Melissa Croteau, *California Baptist University*
Sarah Crover, *University of Wisconsin, Madison*
Andrea Crow, *Boston College*
Charlene Cruxent, *Université Paul-Valéry Montpellier 3*
Tracy Clare Cummings, *San Diego State University*
Kevin Curran, *Université de Lausanne*
David Currell, *American University of Beirut*
Deborah Curren-aquino, *Folger Shakespeare Library*
Ambereen Dadabhoy, *Harvey Mudd College*
Mark James Dahlquist, *Miami University*
Amelia Dahmer, *University of Michigan*
Alice A. Dailey, *Villanova University*
Liam Thomas Daley, *University of Maryland*
Drew Daniel, *Johns Hopkins University*
Robert F. Darcy, *University of Nebraska, Omaha*
Callan Davies, *University of Roehampton*
Kurt Daw, *San Francisco State University*
Claire Dawkins, *Stanford Online High School*
Anthony B. Dawson, *University of British Columbia*
Brent Dawson, *University of Oregon*
Mail Marques De Azevedo, *Centro Universitário Campos de Andrade*
Eric L. De Barros, *University of the West Indies, St. Augustine*
Ian H. De Jong, *University of Nevada, Reno*
Rachael Deagman Simonetta, *University of Colorado, Boulder*
Justine DeCamillis, *University of Maryland*
Laura DeFurio, *University of Alabama*
Jane Hwang Degenhardt, *University of Massachusetts, Amherst*
Carla Della Gatta, *University of Southern California*
James A. DeMasi, *University of Dallas*
Samantha Jayne Demmerle, *Indiana University*

- Stephen Deng, *Michigan State University*
 Kristin Denslow, *Southwestern
 Adventist University*
 Emma Lesley Depledge, *Université de Neuchâtel*
 Alan C. Dessen, *University of North Carolina*
 Allison Kay Deutermann, *Baruch College, CUNY*
 Christina Marie Devlin, *Montgomery College*
 Amrita Dhar, *Ohio State University*
 Amanda Di Ponio, *Huron University College*
 Gina M. Di Salvo, *University of Tennessee*
 Vernon Guy Dickson, *Florida
 International University*
 Averyl Dietering, *University of California, Davis*
 Craig Dionne, *Eastern Michigan University*
 Kyle DiRoberto, *University of Arizona*
 Dustin Dixon, *Grinnell College*
 Michael Dobson, *Shakespeare Institute,
 University of Birmingham*
 Lara Dodds, *Mississippi State University*
 Frances E. Dolan, *University of California, Davis*
 Jeff Doty, *University of North Texas*
 Michelle M. Dowd, *University of Alabama*
 Ben Doyle, *Palgrave Macmillan*
 Jenna Dreier, *University of Minnesota*
 Samantha Diane Dressel, *Chapman University*
 Annette Drew-Bear, *Washington
 and Jefferson College*
 Jennifer Drouin, *McGill University*
 Lowell Duckert, *University of Delaware*
 Karrie Ducusin, *Bloomsbury Academic*
 Mark Dudgeon, *Bloomsbury Academic*
 Holly E. Dugan, *George Washington University*
 Don-John Dugas, *Kent State University*
 Emily Lauren Duncan, *Calhoun
 County Chamber Foundation*
 Leslie C. Dunn, *Vassar College*
 Derek Dunne, *Cardiff University*
 Eric Dunnum, *Campbell University*
 Claire J. C. Eager, *Colorado College*
 Heather C. Easterling, *Gonzaga University*
 Paul Edmondson, *Shakespeare Birthplace Trust*
 Jennifer J. Edwards, *Shakespeare's Globe*
 Gabriel Egan, *De Montfort University*
 Katherine Eggert, *University
 of Colorado, Boulder*
 Jeremy Ehrlich, *Internet Shakespeare Editions*
 Hillary Eklund, *Loyola University New Orleans*
 Erin Ellerbeck, *University of Victoria*
 Laurie Ellinghausen, *University
 of Missouri, Kansas City*
 Catherine Elliott Tisdale, *University
 of Massachusetts, Amherst*
- John W. Ellis-Etchison, *Rice University*
 Stephanie Elsky, *Rhodes College*
 William E. Engel, *Sewanee: The
 University of the South*
 Lars Engle, *University of Tulsa*
 Sarah E. Enloe, *American Shakespeare Center*
 Lynn Enterline, *Vanderbilt University*
 Alice Equestri, *University of Sussex*
 Peter Erickson, *Northwestern University*
 Lauren Eriks Cline, *University of Michigan*
 Natalie Katerina Eschenbaum, *University
 of Wisconsin, La Crosse*
 Ruben Espinosa, *University of Texas, El Paso*
 John Charles Estabillio, *Records of
 Early English Drama (REED)*
 Laura A. Estill, *St. Francis Xavier University*
 Mel Evans, *University of Leicester*
 Donna Even-Kesef, *Stanford University*
 Laura Ewen, *Bloomsbury Academic*
 Alana K. Faagai, *University of
 Nevada, Las Vegas*
 Claire M. Falck, *Rowan University*
 Darlene Farabee, *University of South Dakota*
 Jay Farness, *Northern Arizona University*
 Mark David Farnsworth, *University of Nevada*
 Valerie M. Fazel, *Arizona State University*
 Jennifer Feather, *University of
 North Carolina, Greensboro*
 Jean E. Feerick, *John Carroll University*
 Susan M. Felch, *Calvin College*
 Margaret W. Ferguson, *University
 of California, Davis*
 Ewan Fernie, *Shakespeare Institute,
 University of Birmingham*
 Emily Fine, *University of Alabama*
 Richard Finkelstein, *University
 of Mary Washington*
 Tom Fish, *Oglethorpe University*
 Will Fisher, *Lehman College and
 Graduate Center, CUNY*
 Jennifer Flaherty, *Georgia College*
 Andrew J. Fleck, *University of Texas, El Paso*
 Mary Floyd-Wilson, *University of North Carolina*
 Christopher D. Foley, *University
 of Southern Mississippi*
 Gregory A. Foran, *Nazareth College*
 Jennifer Forsyth, *Kutztown University*
 Cora Fox, *Arizona State University*
 Liz Fox, *University of Massachusetts, Amherst*
 Timothy Francisco, *Youngstown
 State University*
 Heather Frazier, *Ohio State University*



47TH ANNUAL MEETING
Shakespeare Association of America

- Jessica Roberts Frazier, *Folger Shakespeare Library*
Carla Freccero, *University of California, Santa Cruz*
Sonya Freeman Loftis, *Morehouse College*
Erich D. Freiburger, *Jacksonville University*
Gavi Fried, *University of Pennsylvania Press*
Ari Friedlander, *University of Mississippi*
Matthew Frost, *Manchester University Press*
Susan Caroline Frye, *University of Wyoming*
Barbara Fuchs, *University of California, Los Angeles*
Erica Fudge, *University of Strathclyde*
Mary C. Fuller, *Massachusetts Institute of Technology*
Patricia Fumerton, *University of California, Santa Barbara*
James Funk, *Clemson University*
Evelyn Gajowski, *University of Nevada, Las Vegas*
Joseph Gamble, *University of Michigan*
Brett Gamboa, *Dartmouth College*
Leticia Concepción García, *Emerson College*
Jonas Gardsby, *University of Minnesota*
Shannon Jane Garner-Balandrin, *Northeastern University*
John Garrison, *Grinnell College*
Louise Geddes, *Adelphi University*
Melissa Hull Geil, *University of North Carolina*
Edward J. Geisweidt, *Washington, D.C.*
Penelope H. Geng, *Macalester College*
David George, *Urbana University*
Emily Carole George, *University of Washington*
William Germano, *Cooper Union*
David Burr Gerrard, *New York, New York*
Daniel R. Gibbons, *Catholic University of America*
Loreen L. Giese, *Ohio University*
Edward Gieskes, *University of South Carolina*
Tara Gildea, *Rutgers University*
Katherine A. Gillen, *Texas A&M University, San Antonio*
John Douglas Gillies, *University of Essex*
Jason Gleckman, *Chinese University of Hong Kong*
Emily Glider, *Yale University*
Richard Godden, *Louisiana State University*
David B. Goldstein, *York University*
José Manuel González, *Universidad de Alicante*
Robin Good, *Shakespeare Inc.*
Katharine Goodland, *College of Staten Island, CUNY*
Jaime Goodrich, *Wayne State University*
Ahon Kumar Gooptu, *Grinnell College*
Jonathan Goossen, *Ambrose University*
Andrew Gordon, *University of Aberdeen*
Colby Gordon, *Bryn Mawr College*
Mya Lixian Gosling, *Good Tickle Brain*
Suzanne Gossett, *Loyola University Chicago*
Christine Marie Gottlieb, *California State University, East Bay*
Melinda Gough, *McMaster University*
Ani Govjian, *University of North Carolina*
Hugh Grady, *Arcadia University*
David J. Gram, *Oakland University*
Patrick Gray, *Durham University*
Marissa Greenberg, *University of New Mexico*
Andrew Griffin, *University of California, Santa Barbara*
Perry D. Guevara, *Dominican University of California*
Musa Gurnis, *Washington University in St. Louis*
Jessica Hanselman Gray, *University of California, Davis*
Brett Greatley-Hirsch, *University of Leeds*
Douglas E. Green, *Augsburg University*
Marissa Greenberg, *The University of New Mexico*
Susanne Greenhalgh, *University of Roehampton*
Margaret Rich Greer, *Duke University*
Graham Keith Gregor, *Universidad de Murcia*
Andrew Griffin, *University of California, Santa Barbara*
Eric John Griffin, *Millsaps College*
Megan E. Griffin, *Case Western Reserve University*
Huw Griffiths, *University of Sydney*
Jeffrey Blaine Griswold, *University of Maryland*
Stephen Guy-Bray, *University of British Columbia*
Judith Haber, *Tufts University*
Lianne Habinek, *Bard College*
Peter T. Hadorn, *University of Wisconsin, Platteville*
Nicole Hagstrom-Schmidt, *Texas A&M University*
Kim F. Hall, *Barnard College*
Meghan Elizabeth Hall, *University of Pennsylvania*
Adam Halstrom, *University of Utah*
Donna Hamilton, *University of Maryland*
Jess Hamlet, *Hudson Strode Program in Renaissance Studies, University of Alabama*

The Master's Program in English at Georgetown University



Georgetown's English MA Program offers a comprehensive and wide-ranging curriculum in all fields of English, American, and Anglophone literary, cultural, and critical studies as well as courses that allow for concentrations in a variety of emerging interdisciplinary fields. Situated in the District of Columbia, we offer students significant access to the **Library of Congress**, resources at the **Smithsonian Institution**, the Folger Library, and the **National Archives**.

We are unique among stand-alone MA Programs in that we support nearly half of our students with funding, including **full tuition waivers** and **generous stipends**. We also offer students opportunities to engage in a variety of professional development activities, including pedagogical development in the **teaching of writing**, opportunities to work with **new media in pedagogy and research**, and experience working with a **diverse and inclusive** population of undergraduate students.

In addition to our excellent faculty and curricular offerings, we enjoy productive partnerships with the **Lannan Center for Poetics and Social Practice**, the *Journal of Cinema & Media Studies*, and the **Caine Prize for African Writing**. We are also a fully affiliated member of the Folger Institute Consortium and offer students the opportunity to take Folger Institute seminars for credit.

For more information visit our website at
english.georgetown.edu/graduate_program

Connect with Us:



GEORGETOWN UNIVERSITY
Georgetown College
Department of English



47TH ANNUAL MEETING Shakespeare Association of America

William M. Hamlin, *Washington State University*
Molly M. Hand, *Florida State University*
Madiha Hannachi, *Université de Montréal*
Lara D. Hansen, *University of Nevada, Reno*
Elizabeth Hanson, *Queen's University*
Jennifer Hardy, *King's College London*
David Harper, *United States Military Academy*
Brian J. Harries, *Concordia University*
Sharon J. Harris, *Brigham Young University*
Matthew P. Harrison, *West Texas A&M University*
David W. Hartwig, *Weber State University*
Ronan James Hatfull, *University of Warwick*
Joseph Paul Haughey, *Northwest Missouri State University*
Gina Hausknecht, *Coe College*
Paul J. Hecht, *Purdue University Northwest*
Pierre Hecker, *Carleton College*
Donald Hedrick, *Kansas State University*
Megan Heffernan, *DePaul University*
Rebeca Helfer, *University of California, Irvine*
Nicholas Ryan Helms, *University of Alabama*
Ariane Nada Helou, *University of California, Los Angeles*
Frances L. Helphinstine, *Morehead State University*
Kirk Hendershott-Kraetzer, *Olivet College*
Diana E. Henderson, *Massachusetts Institute of Technology*
Margo Hendricks, *University of California, Santa Cruz*
Megan L. Herrold, *University of Southern California*
Thomas Herron, *East Carolina University*
Drew Heverin, *University of Kentucky*
Derrick Edwin Higginbotham, *University of Hawaii, Manoa*
Jennifer Higginbotham, *Ohio State University*
John C. Higgins, *Case Western Reserve University*
Christopher Highley, *Ohio State University*
Sarah Higinbotham, *Emory University*
Benjamin Hilb, *Francis Marion University*
Tracey Hill, *Bath Spa University*
Michael J. Hirrel, *Arlington, VA*
Heather Anne Hirschfeld, *University of Tennessee*
James Hirsh, *Georgia State University*
Rebecca Hixon, *University of Michigan*
Robin Hizme, *Queens College, CUNY*
Elaine Hobby, *Loughborough University*
Allison P. Hobgood, *Willamette University*

Emily Hockley, *Cambridge University Press*
Ton Hoenselaars, *Universiteit Utrecht*
Christine Hoffmann, *West Virginia University*
Lalita Pandit Hogan, *University of Wisconsin, La Crosse*
Patrick Colm Hogan, *University of Connecticut*
Jason Charles Hogue, *University of Texas, Arlington*
Jennifer R. Holl, *Rhode Island College*
Peter Holland, *University of Notre Dame*
Scott A. Hollifield, *University of Nevada, Las Vegas*
Michelle Houston, *Edinburgh University Press*
Gavin Hollis, *Hunter College, CUNY*
Christopher Holmes, *SUNY Maritime College*
Jonathan H. Holmes, *Central State University*
Adam G. Hooks, *University of Iowa*
Jonathan Robert Hope, *Arizona State University*
Helen Alexandra Hopkins, *Birmingham City University*
Robert Hornback, *Oglethorpe University*
Chelsea Leigh Horne, *American University*
Jean E. Howard, *Columbia University*
Allan Howe, *The Scholar's Choice*
Mary Lynn Howe, *The Scholar's Choice*
Nancy Howe, *The Scholar's Choice*
Stephanie Howieson, *Longwood University*
Jonathan Hsy, *George Washington University*
Helen Hull, *Queens University of Charlotte*
Mark Charles Hulse, *University of Alabama*
Katherine Hunt, *University of Oxford*
Maurice Hunt, *Baylor University*
Matthew Hunter, *Texas Tech University*
Elizabeth A. Hutcheon, *Huntingdon College*
Christine E. Hutchins, *Hostos Community College, CUNY*
Kimberly A. Huth, *California State University, Dominguez Hills*
Hyosik Hwang, *Chungbuk National University*
Wendy Beth Hyman, *Oberlin College*
Michael Anthony Ingham, *Lingnan University, Hong Kong*
William Ingram, *University of Michigan*
Bradley Irish, *Arizona State University*
Sujata Iyengar, *University of Georgia*
Kenneth S. Jackson, *Wayne State University*
Nicole A. Jacobs, *California Polytechnic State University*
Manuel Antonio Jacquez, *Ohio State University*
Eder Jaramillo, *University of Nebraska*
Antonina Javier, *Oxford University Press*



UNIVERSITY
of
VIRGINIA

English
Department

a n d

College of
Arts and Sciences

w e l c o m e s

The Shakespeare
Association of America

W a s h i n g t o n , D C

April 17-21, 2019



Michael P. Jensen, *Shakespeare Newsletter*
Phebe Jensen, *Utah State University*
Janelle Jenstad, *University of Victoria*
Kristine Johanson, *University of Amsterdam*
Eric M. Johnson, *Folger Shakespeare Library*
Laurie Johnson, *University of*

Southern Queensland

Melissa M. Johnson, *University of Minnesota*
Bronwyn Johnston, *London, UK*
Emily Griffiths Jones, *University of South Florida*
Gwilym Jones, *University of Westminster*
Melissa J. Jones, *Eastern Michigan University*
Robert W. Jones, *University of Texas, Austin*
William R. Jones, *Murray State University*
Lenora Belle Jones-Pierce, *Middle*
Tennessee State University
Alexa Alice Joubin, *George*
Washington University
John Joseph Joughin, *UK*
John Jowett, *Shakespeare Institute,*
University of Birmingham
Marc Jason Jurgens, *University of*
Minnesota, Twin Cities

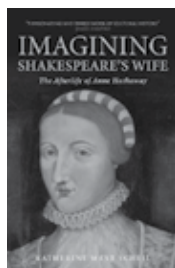
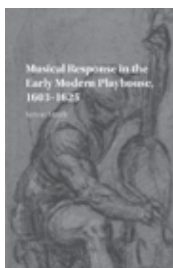
Fayaz Kabani, *Allen University*
Katie Kadue, *University of Chicago*
Mark B. Kaethler, *Medicine Hat College*
Mira Assaf Kafantaris, *Ohio State University*
Coppélia Kahn, *Brown University*
Rayna Kalas, *Cornell University*
M. Lindsay Kaplan, *Georgetown University*
Farah Karim-Cooper, *Shakespeare's Globe*
Isabel C. Karremann, *Universität Würzburg*
David Kathman, *Chicago, IL*
James Kearney, *University of*
California, Santa Barbara
Daniel Lindfors Keegan, *American*
University of Sharjah
Andrew S. Keener, *Santa Clara University*
Allison Kellar, *Wingate University*
Shannon Elizabeth Kelley, *Fairfield University*
Charles Adams Kelly, *University of Michigan*
Erin E. Kelly, *University of Victoria*
Erin K. Kelly, *California State University, Chico*
Erin Kathleen Kelly, *Rutgers University*
Sawyer K. Kemp, *University of California, Davis*
Gillian Murray Kendall, *Smith College*

CAMBRIDGE

Presenting the very best in
Shakespeare
scholarship



Get **20% off** titles on display at SAA 2019 including



Visit our SAA 2019 booth for more information
on our new Cambridge Shakespeare online platform

Hosting the Works and Worlds of Shakespeare on
Cambridge Core for the very first time



- Matthew J. Kendrick, *William Paterson University*
- Amy Kenny, *University of California, Riverside*
- Bill Kerwin, *University of Missouri*
- Andy Kesson, *Roehampton University*
- Emelye Keyser, *University of Virginia*
- Dennis Kezar, *University of Utah*
- Leighla Khansari, *Ohio State University*
- Natalia N. Khomenko, *York University*
- M. J. Kidnie, *Western University*
- Frederick Paul Kiefer, *University of Arizona*
- Daeyeong (Dan) Kim, *Stanford University*
- Dorothy Kim, *Brandeis University*
- Stephen Kim, *Cornell University*
- Tai-won Kim, *Sogang University*
- Claire Kimball, *Dale City, VA*
- Devori Kimbro, *University of Tennessee, Chattanooga*
- Clare R. Kinney, *University of Virginia*
- Peter Kirwan, *University of Nottingham*
- András Kiséry, *City College of New York, CUNY*
- Aaron Wells Kitch, *Bowdoin College*
- Sonja Kleij, *Queen's University Belfast*
- James A. Knapp, *Loyola University Chicago*
- Ross M. Knecht, *Emory University*
- Jeffrey Todd Knight, *University of Washington*
- Leah Knight, *Brock University*
- Gillian Knoll, *Western Kentucky University*
- Roslyn L. Knutson, *University of Arkansas, Little Rock*
- Justin Barnes Kolb, *American University in Cairo*
- Laura E. Kolb, *Baruch College, CUNY*
- Alysia Kolentis, *St. Jerome's University, University of Waterloo*
- Elizabeth Zeman Kolkovich, *Ohio State University*
- Natasha Korda, *Wesleyan University*
- Radhika Koul, *Stanford University*
- Matt Kozusko, *Ursinus College*
- Ross Deans Kristensen-McLachlan, *Aarhus University*
- Peter Kuling, *University of Ottawa*
- John Kunat, *Sonoma State University*
- Stuart M. Kurland, *Duquesne University*
- James Kuzner, *Brown University*
- Elizabeth Labiner, *University of Arizona*
- Ben LaBreche, *University of Mary Washington*
- John Ladd, *Washington University in St. Louis*
- Jakob Ladegaard, *Aarhus Universitet*
- Juan Lamata, *Stanford University*
- Jonathan P. Lamb, *University of Kansas*
- Julian Lamb, *Chinese University of Hong Kong*
- Jesse M. Lander, *University of Notre Dame*
- Katharine E. Landers, *University of North Carolina*
- Jess Landis, *Franklin Pierce University*
- David Landreth, *University of California, Berkeley*
- Douglas M. Lanier, *University of New Hampshire*
- Ann P. Lanpher, *Sidwell Friends School*
- Rebecca Laroche, *University of Colorado, Colorado Springs*
- François Laroque, *Université Sorbonne Nouvelle - Paris 3*
- Lindsey Larre, *Duke University*
- Mark Larubio, *Arizona State University*
- Alexander Paulsson Lash, *Columbia University*
- Emily Rose Lathrop, *George Washington University*
- Daniel G. Lauby, *University of New Hampshire*
- Vincent Laughery, *University of Lausanne*
- Liana de Camargo Leão, *Universidade Federal do Paraná*
- Mary Learner, *University of North Carolina*
- Katarzyna Lecky, *Bucknell University*
- William Miles Lee, *United States Air Force Academy*
- Courtney Lehmann, *University of the Pacific*
- Kent Lehnhof, *Chapman University*
- Amanda M. Lehr, *Vanderbilt University*
- Kelly Lehtonen, *The King's College*
- Bi-qi Beatrice Lei, *National Taiwan University*
- Jasmine S. Lellock, *Newton South High School*
- Sophie Marie Lemercier-Goddard, *ENS, Université de Lyon*
- Rebecca Lemon, *University of Southern California*
- Victor Lenthe, *Bilkent University*
- Alice Leonard, *University of Oxford*
- Kendra Preston Leonard, *Silent Film Sound & Music Archive*
- Nathaniel C. Leonard, *Westminster College, Fulton*
- Ross Lerner, *Occidental College*
- Marina Leslie, *Northeastern University*
- Laura E. Levine, *New York University*
- Cynthia Lewis, *Davidson College*
- Sarah Lewis, *King's College London*
- Garth Libhart, *University of Maryland, College Park*
- Amy Elizabeth Lidster, *King's College London*
- Naomi Conn Liebler, *Montclair State University*
- Erika T. Lin, *Graduate Center, CUNY*
- Sarah Lindenbaum, *Illinois Wesleyan University*



47TH ANNUAL MEETING Shakespeare Association of America

Gabrielle Linnell, *Folger Shakespeare Library*

Joan Pong Linton, *Indiana University*

Sarah E. R. Linwick, *Washington, D.C.*

Caroline Lion, *Shakespeare Institute,*

University of Birmingham

Noam Tzvi Lior, *University of Toronto*

Arthur L. Little, Jr., *University of*

California, Los Angeles

William J. Lloyd, *Damascus, MD*

Melanie Catherine Lo, *University*

of Colorado, Boulder

Brian C. Lockey, *St. John's University*

Sandra A. Logan, *Michigan State University*

Emily L. Loney, *University of Wisconsin, Madison*

Ania Loomba, *University of Pennsylvania*

Catherine Loomis, *Rochester*

Institute of Technology

Natalie J. Loper, *University of Alabama*

Jeremy Lopez, *University of Toronto*

Rory Vincent Loughnane, *University of Kent*

Genevieve Love, *Colorado College*

Jennifer Low, *Florida Atlantic University*

Diane Lowman, *Shakespeare Institute*

Georgina M. Lucas, *University of Birmingham*

Christina Luckyj, *Dalhousie University*

Timothy Lundy, *Columbia University*

Ivan Lupić, *Stanford University*

Sara Luttfriing, *Pennsylvania State Behrend*

Michael Lutz, *Independent Scholar*

Kathleen Lynch, *Folger Shakespeare Library*

Russell McConnell, *Southern*

Methodist University

Alex MacConochie, *Boston University*

Joyce G. MacDonald, *University of Kentucky*

Ian MacInnes, *Albion College*

Ellen MacKay, *University of Chicago*

Sally-Beth MacLean, *University of Toronto*

Emily MacLeod, *George Washington University*

Laury Magnus, *United States*

Merchant Marine Academy

Lynne Magnusson, *University of Toronto*

Scott Maisano, *University of*

Massachusetts Boston

Jessica Lin Malay, *University of Huddersfield*

Cristina Malcolmson, *Bates College*

Eric S. Mallin, *University of Texas, Austin*

Juliet Mandell, *University of Michigan*

Laura Mandell, *Texas A&M University*

Lawrence Manley, *Yale University*

Joseph Mansky, *Bard College*

Howard Marchitello, *Rutgers University, Camden*

James D. Mardock, *University of Nevada, Reno*

James J. Marino, *Cleveland State University*

Zoltán Márkus, *Vassar College*

Karen Sawyer Marsalek, *St. Olaf College*

Geoffrey David Marsh, *Victoria & Albert Museum*

Randall Martin, *University of New Brunswick*

Paige Martin Reynolds, *University*

of Central Arkansas

Ann M. Martinez, *Kent State University at Stark*

Lucía Martínez Valdivia, *Reed College*

Márcia Amaral Peixoto Martins, *Pontifícia*

Universidade Católica do Rio de Janeiro

Maya Mathur, *University of Mary Washington*

Ágnes Matuska, *Szegedi Tudományegyetem*

Katharine Eisman Maus, *University of Virginia*

Lynn M. Maxwell, *Spelman College*

Sarah Mayo, *University of Georgia*

Kris McAbee, *University of Arkansas, Little Rock*

Alexander Lowe McAdams, *Rice University*

Jessica McCall, *Delaware Valley University*

Kristen McCants, *University of*

California, Santa Barbara

Jeanne McCarthy, *Georgia Gwinnett College*

Ginny McCarley, *University of Mississippi*

Katelyn McCarthy, *University of Minnesota*

Marcia A. McDonald, *Belmont University*

Claire McEachern, *University of*

California, Los Angeles

Joshua J. McEvilla, *University of Toronto*

Martin McGuire, *University of Michigan*

Emer Ann McHugh, *National*

University of Ireland, Galway

David McInnis, *University of Melbourne*

Elizabeth Katherine McIntosh,

Columbia University

Linda McJannet, *Bentley University*

Christopher Ross McKeen, *Renaissance*

Society of America

Roderick H. McKeown, *University of Toronto*

Clare McManus, *University of Roehampton*

Gordon McMullan, *King's College London*

Kate McPherson, *Utah Valley University*

Fernanda Medeiros, *Universidade do*

Estado do Rio de Janeiro, Brazil

Nedda Mehdizadeh, *University of*

California, Los Angeles

Carol Mejia LaPerle, *Wright State University*

Kirk Melnikoff, *University of North*

Carolina, Charlotte

Maria Sequeira Mendes,

Universidade de Lisboa

Kirsten N. Mendoza, *University of Dayton*

Steve Mentz, *St. John's University*



JOHNS HOPKINS
UNIVERSITY

Welcomes the

Shakespeare Association of America

The Sheridan Libraries
and the Virginia Fox Stern
Center for the History of the Book
in the Renaissance

The Charles S. Singleton Center
for the Study of Premodern Europe

The Alexander Grass Humanities Institute

Krieger School of Arts and Sciences

Department of English



Paul D. Menzer, *Mary Baldwin University*
 Alicia Jordan Meyer, *University of Pennsylvania*
 Allison Machlis Meyer, *Seattle University*
 Bernadette Meyler, *Stanford University*
 Derek Mikilas, *Oxford University Press*
 Andrew Miller, *Williams College*
 Derek Miller, *Harvard University*
 Anne-Marie Miller-Blaise, *Université
 Sorbonne Nouvelle - Paris 3*
 Tracey Miller-Tomlinson, *New
 Mexico State University*
 Gretchen E. Minton, *Montana State University*
 Robert S. Miola, *Loyola University Maryland*
 Bella Mirabella, *New York University*
 Dianne Mitchell, *The Queen's College, Oxford*
 John A. Mitchell, *Oakland Community College*
 Cassie Miura, *University of
 Washington, Tacoma*
 Julia Mix Barrington, *Boston University*
 Kathryn M. Moncrief, *Washington College*
 Susannah Brietz Monta, *University
 of Notre Dame*
 Taarini Mookherjee, *Columbia University*

Gaywyn E. Moore, *Missouri Western
 State University*
 Helen Moore, *Corpus Christi College, Oxford*
 Shawn Moore, *Florida SouthWestern
 State College*
 Benjamin Moran, *Ohio State University*
 Thomas J. Moretti, *Iona College*
 Sara Morrison, *William Jewell College*
 David J. Morrow, *College of St. Rose*
 Rebecca Mortimer, *Manchester
 University Press*
 Nick Moschovakis, *Bethesda, MD*
 Joe Moshenska, *University of Oxford*
 Ian Frederick Moulton, *Arizona State University*
 Subha Mukherji, *University of Cambridge*
 James Y. Mulder, *Bentley University*
 Cyrus G. Mulready, *SUNY New Paltz*
 Victoria Muñoz, *Hostos Community
 College, CUNY*
 Ian Munro, *University of California, Irvine*
 Lucy Munro, *King's College London*
 Jennifer A. Munroe, *University of
 North Carolina, Charlotte*

THIS AD ISN'T BIG
 ENOUGH TO HOLD ALL THE
 SHAKESPEARE
 IN STAUNTON, VA.
 YOU'LL JUST HAVE TO COME
 AND SEE FOR YOURSELF



AMERICANSHAKESPEARECENTER.COM



MARYBALDWIN.EDU

- Rebecca Munson, *Princeton University*
 Ineke Murakami, *University at Albany, SUNY*
 Esei M. Murakishi, *Washington University in St. Louis*
 Jessica C. Murphy, *University of Texas, Dallas*
 Heather J. Murray, *Coastal Pines Technical College*
 M. Stephanie Murray, *Carnegie Mellon University*
 Molly, Murray, *Columbia University*
 Bernadette Myers, *Columbia University*
 Nova Myhill, *New College of Florida*
 Bryan D. Nakawaki, *Purdue University*
 Jessie Herrada Nance, *Portland State University*
 Vin Nardizzi, *University of British Columbia*
 Joseph Navitsky, *West Chester University*
 Noémie Ndiaye, *Carnegie Mellon University*
 Bernice M. Neal, *Toronto, ON*
 David Nee, *Harvard University*
 Carol Thomas Neely, *University of Illinois, Urbana-Champaign*
 Kelly Neil, *Spartanburg Methodist College*
 Alan H. Nelson, *University of California, Berkeley*
 Mark Netzloff, *University of Wisconsin, Milwaukee*
 Sarah Neville, *Ohio State University*
 Lori Humphrey Newcomb, *University of Illinois, Urbana-Champaign*
 James Trygve Newlin, *Case Western Reserve University*
 Harry Rex Newman, *Royal Holloway, University of London*
 Karen Newman, *Brown University*
 Su Fang Ng, *University of Oklahoma*
 Catherine Nicholson, *Yale University*
 Jennifer Ellen Nicholson, *University of Sydney*
 David Nicol, *Dalhousie University*
 Marissa Nicosia, *Pennsylvania State University, Abington College*
 Rebecca Lee Niles, *Folger Shakespeare Library*
 Dan Normandin, *Washington University in St. Louis*
 Kara J. Northway, *Kansas State University*
 Peter Novak, *University of San Francisco*
 Marianne Novy, *University of Pittsburgh*
 Hillary M. Nunn, *University of Akron*
 Peggy O'Brien, *Folger Shakespeare Library*
 Richard O'Brien, *Birmingham, UK*
 Sharon O'Dair, *University of Alabama*
 Karla Oeler, *Stanford University*
 Elisa Oh, *Howard University*
 Susan O'Hara, *Georgian Court University*
 Niamh J. O'Leary, *Xavier University*
 Kristen L. Olson, *Pennsylvania State University*
 Evelyn O'Malley, *University of Exeter*
 Ashley O'Mara, *Syracuse University*
 Scott O'Neil, *University of Rochester*
 Stephen O'Neill, *National University of Ireland, Maynooth*
 William A. Oram, *Smith College*
 Stephen Orgel, *Stanford University*
 Robert Ormsby, *Memorial University of Newfoundland*
 Joseph M. Ortiz, *University of Texas, El Paso*
 David L. Orvis, *Appalachian State University*
 Laurie E. Osborne, *Colby College*
 Helen Ostovich, *McMaster University*
 Jessica Otis, *George Mason University*
 Avraham Oz, *University of Haifa & Academy of Performing Arts, Tel Aviv*
 Bethany Packard, *Transylvania University*
 Ankit Pahwa, *University of Toronto Press*
 Matteo Pangallo, *Virginia Commonwealth University*
 Shormishtha Panja, *University of Delhi*
 Jamie Paris, *Corpus Christi College, British Columbia*
 Jennifer Park, *University of North Carolina, Greensboro*
 John L. Parker, *University of Virginia*
 Patricia A. Parker, *Stanford University*
 Peter Alexander Parolin, *University of Wyoming*
 Kevin Pask, *Concordia University*
 Gail Kern Paster, *Folger Shakespeare Library*
 Halyna Olexiyivna Pastushuk, *Ukrainian Catholic University*
 Vimala C. Pasupathi, *Hofstra University*
 Anthony Guy Patricia, *Concord University*
 Elizabeth Patton, *Johns Hopkins University*
 Ryan Singh Paul, *Texas A&M University, Kingsville*
 Wes D. Pearce, *University of Regina*
 Edward Pechter, *University of Victoria*
 Joseph Penczak, *Troupe of Friends*
 Elizabeth Pentland, *York University*
 Natalia Pérez, *University of Southern California*
 Curtis Perry, *University of Illinois, Urbana-Champaign*
 Kevin Petersen, *University of Massachusetts, Lowell*
 Jean Peterson, *Bucknell University*
 Jess R. Pfeffer, *Boston, MA*
 Mardy Philippian, *Lewis University*
 Peter Picetti, *University of Nevada, Reno*



47TH ANNUAL MEETING
Shakespeare Association of America

Holly Crawford Pickett, *Washington and Lee University*

Robert B. Pierce, *Oberlin College*

Stephanie Pietros, *College of Mount St. Vincent*

Triphi Pillai, *Coastal Carolina University*

Caro Pirri, *Rutgers University*

Katharine Pitt, *New York, NY*

L. Monique Pittman, *Andrews University*

Kyle A. Pivetti, *Norwich University*

Tanya Pollard, *Brooklyn College, CUNY*

Lois Dorais Potter, *University of Delaware*

Aaron T. Pratt, *University of Texas, Austin*

Chloe Kathleen Preedy, *University of Exeter*

Richard Preiss, *University of Utah*

Maria Teresa Prendergast, *College of Wooster*

V. K. Preston, *University of Toronto*

Kendrick W. Prewitt, *University of West Alabama*

Eoin Price, *Swansea University*

Kathryn Prince, *University of Western Australia*

John Ray Proctor III, *Tulane University*

Melissa Pullara, *Carleton University*

James Purkis, *University of Western Ontario*

Valerie Clayman Pye, *Long*

Island University, Post

Kevin A. Quarmby, *College of St. Scholastica*

Gerit Quealy, *New York, NY*

Kirk Quinsland, *Fordham University*

Karen Raber, *University of Mississippi*

Jane Raisch, *University of York*

Ayesha Ramachandran, *Yale University*

Kamini Ramphal, *Cambridge University Press*

William Reginald Rampone, Jr., *South*

Carolina State University

Vanessa L. Rapatz, *Ball State University*

Eric Rasmussen, *University of Nevada*

Hannah Hessel Ratner, *Shakespeare Theatre*

Maggie Ellen Ray, *Prince George's*

County Public Schools

Sid Ray, *Pace University*

Leticia Álvarez-Recio, *Universidad de Sevilla*

Katy Reedy, *Lake Forest College*

Anne Sophie Refskou, *University*

of Surrey, Guildford

Robert L. Reid, *Emory and Henry College*

MA in Shakespeare Studies



SHAKESPEARE'S
GLOBE

The perfect MA course for students of Shakespeare, this unique collaboration between Shakespeare's Globe and King's College London offers a truly unparalleled experience.

To learn more about the course, visit shakespearesglobe.com/ma or email higher.education@shakespearesglobe.com

- Elizabeth Marie Beaumont Reinwald,
University of Connecticut
- Emily Elizabeth Rendek, *University
of South Carolina*
- Anna Reynolds, *University of York*
- Sarah Sands Rice, *University of
California, Berkeley*
- Jennifer Richards, *Newcastle University*
- Jonah Kent Richards, *University at Albany, SUNY*
- Gabriel A. Rieger, *Concord University*
- Milla Cozart Riggio, *Trinity College*
- Matthew Rinkevich, *University of Delaware*
- Melanie Rio, *University of
Maryland, College Park*
- Marguerite Rippy, *Marymount University*
- Matthew Ritger, *Princeton University*
- Elizabeth J. Rivlin, *Clemson University*
- Karen Robertson, *Vassar College*
- Lauren Robertson, *Columbia University*
- Benedict S. Robinson, *Stony Brook University*
- Lisa Robinson, *St. John's University*
- Marsha S. Robinson, *Clinton, WA*
- Marie Roche, *University of
Massachusetts, Amherst*
- Edward L. Rocklin, *California State
Polytechnic University, Pomona*
- Amy Rodgers, *Mount Holyoke College*
- Katherine Romack, *University of West Florida*
- Christina Romanelli, *Meredith College*
- Mary Beth Rose, *University of Illinois
at Chicago, Professor Emerita*
- McKenna Suzanne Rose, *Georgia
Institute of Technology*
- Jessica Rosenberg, *University of Miami*
- Colleen Ruth Rosenfeld, *Pomona College*
- Sarah C. E. Ross, *Victoria
University of Wellington*
- Laurie Rostain, *Université Clermont Auvergne*
- Danielle Rosvally, *University at Buffalo, SUNY*
- Amos Rothschild, *St. Thomas Aquinas College*
- Jennifer Row, *University of Minnesota*
- Katherine Rowe, *College of William & Mary*
- Lindsey Row-Heyveld, *Luther College*
- Priyanka Roy, *Victoria University of Wellington*
- Marjorie Rubright, *University of
Massachusetts, Amherst*
- David Ruiter, *University of Texas, El Paso*
- Roy Rukkila, *Arizona State University*
- Jennifer R. Rust, *St. Louis University*
- Tom Rutter, *University of Sheffield*
- Amanda Kay Ruud, *University
of Southern California*
- Bradley David Ryner, *Arizona State University*
- Jenny Rebecca Rytting, *Northwest
Missouri State University*
- Rachana Sachdev, *Susquehanna University*
- Ofelia Da C. Machado Sagres,
Rio de Janeiro, Brazil
- Carolyn Sale, *University of Alberta*
- Paul Salzman, *University of
Newcastle (Australia)*
- Alexander Samson, *University College London*
- Melissa E. Sanchez, *University of Pennsylvania*
- Jordi Sánchez-Martí, *Universidad de Alicante*
- Julianne Sandberg, *Samford University*
- Kathryn Vomero Santos, *Trinity University*
- Gregory Sargent, *University of
Massachusetts, Amherst*
- Debapriya Sarkar, *University of Connecticut*
- Ashley Sarpong, *University of California, Davis*
- Marvin Tyler Sasser, *University of Alabama*
- Crom Saunders, *Columbia College Chicago*
- Robert Sawyer, *East Tennessee State University*
- Joan Saxton, *San Francisco, CA*
- Katherine West Scheil, *University of Minnesota*
- James Schiffer, *SUNY New Paltz*
- Sara Schlemm, *Independent Scholar*
- June Schlueter, *Lafayette College*
- Tanya Schmidt, *New York University*
- Gregory M. Schnitzspahn, *Fisher College*
- Michael Schoenfeldt, *University of Michigan*
- Daniel Allen Shore, *Georgetown University*
- Charlotte Scott, *Goldsmiths College London*
- Susan V. Scott, *London School of Economics*
- Elizabeth Scott-Baumann,
King's College London
- Amy Scott-Douglass, *Marymount University*
- Courtney Naum Scuro, *University
of California, Riverside*
- Alison Searle, *University of Leeds*
- Tracey Sedinger, *University of
Northern Colorado*
- Adele Seeff, *University of Maryland*
- Nancy Selleck, *University of
Massachusetts, Lowell*
- Gregory M. Colón Semenza, *University
of Connecticut, Storrs*
- Shiladitya Sen, *Montclair State University*
- Molly E. Seremet, *Mary Baldwin University*
- James H. Seth, *Auburn University*
- Laurie Shannon, *Northwestern University*
- Will Sharpe, *University of Birmingham*
- Elizabeth Sharrett, *Lynchburg College*
- Justin P. Shaw, *Emory University*



47TH ANNUAL MEETING

Shakespeare Association of America

- Kayla Shearer, *University of Texas, Austin*
Jonathan Shelley, *Georgia Institute of Technology*
Nicole Sheriko, *Rutgers University*
Anita Gilman Sherman, *American University*
Donovan H. Sherman, *Seton Hall University*
Maria Shmygol, *Université de Genève*
Lauren Shohet, *Villanova University*
Lauren Shook, *Texas Lutheran University*
Sophie Louise Shorland, *University of Warwick*
Emily Shortslef, *University of Kentucky*
Michael W. Shurgot, *South Puget Sound Community College*
James R. Siemon, *Boston University*
Melanie Simoes Santos, *University of Toronto*
David Carroll Simon, *University of Maryland, College Park*
Anna-Claire Simpson, *University of Massachusetts, Amherst*
Jerome Singerman, *University of Pennsylvania Press*
Jyotsna G. Singh, *Michigan State University*
Ethan Sinnott, *Gallaudet University*
Andrew Sisson, *Williams College*
Jill Slater, *Helms Briscoe*
Joel Elliot Slotkin, *Towson University*
Deanna Smid, *Brandon University*
Bruce R. Smith, *University of Southern California*
Charlene V. Smith, *Alexandria, VA*
Emma Smith, *University of Oxford*
Ian Smith, *Lafayette College*
Kathleen Kalpin Smith, *University of South Carolina, Aiken*
Rochelle Smith, *Frostburg State University*
Rosalind Lewin Smith, *University of Newcastle*
Simon Smith, *Shakespeare Institute, University of Birmingham*
Roxane Smyer, *Southwest Shakespeare Company*
Adam Smyth, *Balliol College, Oxford*
Megan Snell, *University of Texas, Austin*
Jillian Snyder, *University of Notre Dame*
Lindsey D. Snyder, *Silver Spring, MD*
Andrew Sofer, *Boston College*
Emma Maggie Solberg, *Bowdoin College*
Sara Francesca Soncini, *Università di Pisa*
Geraldo U. Sousa, *University of Kansas*
Christi Spain-Savage, *Siena College*
Whitney Sperrazza, *University of Kansas*
Eileen Sperry, *College of St. Rose*
Stephen Spiess, *Babson College*
Christina M. Squitieri, *New York University*
Kelly J. Stage, *University of Nebraska*
Robert Stagg, *University of Oxford*
Carl G. Stahmer, *University of California, Davis*
Lesley Iris Stanford, *Stanford University Online High School*
Goran V. Stanivukovic, *St. Mary's University*
Kay Stanton, *California State University, Fullerton*
Lisa S. Starks, *University of South Florida, St. Petersburg*
Liz Statham, *Stratford-Upon-Avon, UK*
Robert D. Stefanek, *United States Air Force Academy*
William Steffen, *American International College*
Dustin Stegner, *California Polytechnic State University*
Mary K. Steible, *Southern Illinois University, Edwardsville*
Lieke Stelling, *Utrecht University*
Joseph Stephenson, *Abilene Christian University*
Tiffany Stern, *Shakespeare Institute, University of Birmingham*
Andrea R. Stevens, *University of Illinois, Urbana-Champaign*
Alan Stewart, *Columbia University*
Rachel E. Stewart, *University of Birmingham*
Jan Stirm, *University of Wisconsin, Eau Claire*
James W. Stone, *American University*
Andrew McConnell Stott, *University of Southern California*
Robert E. Stretter, *Providence College*
Deb Streusand, *University of Texas, Austin*
Richard Strier, *University of Chicago*
Carol St Thomasino, *Palgrave Macmillan*
Paul Sugarman, *Shakespeare Inc.*
Betsy Sullivan, *University of Southern California*
Erin Marie Sullivan, *Shakespeare Institute, University of Birmingham*
Garrett A. Sullivan, *Pennsylvania State University*
David A. Summers, *Capital University*
Sarah Sutherland, *Mount Holyoke College*
Natalie Suzelis, *Carnegie Mellon University*
David Swain, *Southern New Hampshire University*
Jessica Swain, *McMaster University*
Steven Swarbrick, *Baruch College, CUNY*
Daniel Thomas Swift, *New College of the Humanities*

- Nathan Szymanski, *Kwantlen Polytechnic University*
- Dyani Johns Taff, *Ithaca College*
- Liliana Talwatte, *University of Michigan*
- Robert William Tate, *Duke University*
- Elizabeth E. Tavares, *Pacific University*
- Gary L. Taylor, *Florida State University*
- Misha Teramura, *University of Toronto*
- Verena Theile, *North Dakota State University*
- Jeff Theis, *Salem State University*
- Matthew M. Thiele, *Glennville State College*
- Alexander Douglas Thom, *Shakespeare Institute, University of Birmingham*
- Catherine E. Thomas, *Georgia Gwinnett College*
- Trish Thomas, *Oxford University Press*
- Ann Thompson, *King's College London*
- Ayanna Thompson, *Arizona State University*
- Leslie Thomson, *University of Toronto*
- Grace C. Tiffany, *Western Michigan University*
- Amy L. Tigner, *University of Texas, Arlington*
- Dorothy R. Todd, *Texas A&M University*
- Kemal Onur Toker, *Brandeis University*
- Jessica Tooker, *Indiana University, Bloomington*
- Katayoun Torabi, *Texas A&M University*
- Sara V. Torres, *University of Virginia*
- Will Tosh, *Shakespeare's Globe*
- Rebecca Totaro, *Florida Gulf Coast University*
- Jeanette Nguyen Tran, *Drake University*
- Valerie Traub, *University of Michigan*
- Evelyn Tribble, *University of Connecticut*
- Suzanne Trill, *University of Edinburgh*
- Jesús Tronch Tronch-Pérez, *Universitat de València*
- Allie Troyanos, *Palgrave Macmillan*
- Scott A. Trudell, *University of Maryland*
- Mary Helen Truglia, *Indiana University*
- Mary Trull, *St. Olaf College*
- Andrew Tumminia, *Spring Hill College*
- Laura Turchi, *University of Houston*
- Henry S. Turner, *Rutgers University*
- Timothy A. Turner, *University of South Florida Sarasota-Manatee*
- Lisa Ulevich, *University of Wisconsin, Whitewater*
- Deborah Uman, *St. John Fisher College*
- Steven Urkowitz, *City College of New York, CUNY*
- Olga L. Valbuena, *Wake Forest University*
- Andrea F. Van Nort, *United States Air Force Academy*
- Dorothy C. Vanderford, *University of Nevada, Las Vegas*
- Benjamin D. Vanwagoner, *Baruch College, CUNY*
- Cristine M. Varholý, *Hampden-Sydney College*
- Christine Varnado, *University at Buffalo, SUNY*
- Alden T. Vaughan, *Columbia University*
- Virginia Mason Vaughan, *Clark University*
- Jennifer C. Vaught, *University of Louisiana, Lafayette*
- Maggie Vinter, *Case Western Reserve University*
- Kyle Sebastian Vitale, *Yale University*
- Eric D. Vivier, *Mississippi State University*
- Jennie Marie Votava, *Allegheny College*
- Maria Vrcek, *Rutgers University*
- Sabine Naomi Waasdorp, *Universiteit van Amsterdam*
- Andrew Clark Wagner, *University of California, Los Angeles*
- Matthew Drew Wagner, *University of Surrey*
- Sydney Wagner, *Graduate Center, CUNY*
- Michael M. Wagoner, *Florida State University*
- Rob Wakeman, *Mount St. Mary College*
- Jennifer Waldron, *University of Pittsburgh*
- Jonathan A. Walker, *Portland State University*
- Katherine Nicole Walker, *University of North Carolina*
- Anne-Marie E. Walkowicz, *Central State University*
- Wendy Wall, *Northwestern University*
- Sarah Wall-Randell, *Wellesley College*
- Garry Walton, *Meredith College*
- Patricia B. Wareh, *Union College*
- Christopher Warren, *Carnegie Mellon University*
- Greg Watkins, *Stanford University*
- John Watkins, *University of Minnesota*
- Amy Watson, *Cambridge University Press*
- Robert N. Watson, *University of California, Los Angeles*
- Elisabeth Pearson Waugaman, *Potomac, MD*
- Richard M. Waugaman, *Georgetown University*
- Geoffrey Way, *Washington University*
- Valerie Wayne, *University of Hawai'i*
- Ali Webb, *Louisiana State University*
- Ana Weinberg, *De Montfort University*
- Erin Weinberg, *Kingston, ON*
- Lauren Weindling, *Auburn University*
- David Weiss, *Atlanta, GA*
- Emily Weissbourd, *Lehigh University*
- Jane Wells, *Muskingum University*



47TH ANNUAL MEETING Shakespeare Association of America

Clifford Werier, *Mount Royal University*
Sarah Werner, *Washington, DC*
Paul Werstine, *Western University*
Tiffany Jo Werth, *University of California, Davis*
Kimberly R. West, *Cumberland School of Law*
Michael West, *Sacred Heart University*
Leslie Wexler, *University of Toronto*
Emma Whipday, *Newcastle University*
Cristi Nicole Whiskey, *University of Maryland*
Micheline White, *Carleton University*
Paul Whitfield White, *Purdue University*
Aubrey Whitlock, *American Shakespeare Center*
Charles Whitney, *University of Nevada, Las Vegas*
Leah J. Whittington, *Harvard University*
H. Austin Whitver, *University of Alabama*
Reginald Alfred Wilburn, *University of New Hampshire*
Lina Perkins Wilder, *Connecticut College*
Brandy Williams, *University of Maryland, College Park*
Deanne Williams, *York University*
Katherine Schaap Williams, *University of Toronto*
Nora J. Williams, *Independent Scholar*
Owen Williams, *Folger Shakespeare Library*
Sarah F. Williams, *University of South Carolina*
Seth S. Williams, *Barnard College*
Travis D. Williams, *University of Rhode Island*
Laura Williamson-Ambrose, *St. Mary's College*
Rachel J. Willie, *Liverpool John Moores University*
Louise Wilson, *Liverpool Hope University*
Luke Wilson, *Ohio State University*
Kevin Joseph Windhauser, *Columbia University*
Jordan Windholz, *Shippensburg University*
Jessica L. Winston, *Idaho State University*
Michael Witmore, *Folger Shakespeare Library*
Stephen Wittek, *Carnegie Mellon University*

Susanne L. Wofford, *New York University*
Donna Woodford-Gormley, *New Mexico Highlands University*
William F. Wolfgang, *University of Warwick*
Jennifer Linhart Wood, *Folger Shakespeare Library*
Benjamin Woodring, *Chicago, IL*
Gillian Woods, *Birkbeck University of London*
Hana Worthen, *Barnard College, Columbia University*
W. B. Worthen, *Barnard College*
Ramona Wray, *Queen's University Belfast*
Michael Wyatt, *West Lebanon, NH*
Marion Wynne-Davies, *University of Surrey*
Daniel Yabut, *Université Paul-Valéry Montpellier 3*
Paul Yachnin, *McGill University*
Sharon R. Yang, *Worcester State University*
Molly G. Yarn, *University of Cambridge*
Emily Yates, *Michigan State University*
Julian Yates, *University of Delaware*
Jayme M. Yeo, *Belmont University*
L. Lehua Yim, *San Francisco, CA*
Laura Yoder, *New York University*
Gretchen York, *University of Virginia*
Donna G. Young, *Oklahoma Baptist University*
Sandra Young, *University of Cape Town*
Paul Joseph Zajac, *McDaniel College*
Matthew Zarnowiecki, *Touro College*
Corinne M. Zeman, *Washington University in St. Louis*
Michelle Zerba, *Louisiana State University*
Georgianna Ziegler, *Folger Shakespeare Library*
Mary Erica Zimmer, *Massachusetts Institute of Technology*
Amanda Zoch, *Colorado State University*
Adam Zucker, *University of Massachusetts, Amherst*



SAA POLICIES

Social Media Guidelines

In recent years, Twitter, Facebook, and other forms of social media have become a rich resource for scholarly discourse, opening up the conversation to those outside of the conference's physical space. That said, many of us are new to social media, and the conventions around its use are still forming. Here are three basic principles for using Twitter and other social media.

Consent

Recording devices and Twitter broadcast work and comments that have traditionally been relatively closely held. Audio and video recordings of sessions should not be made or posted without the permission of all panelists or seminar members, ideally secured through the moderator or seminar leader in advance of the session. Any speaker has the right to request that his or her work and comments not be tweeted. Please ask subjects involved before posting and tagging photos.

Professional Tone

Twitter feeds represent an extension of the conference online. As such, we encourage participants to consider their comments to be public, avoiding remarks that would be inappropriate in other professional spaces.

Fair Quotation

Live-tweeting often represents itself as a transcript of spoken words. Tweeters should be aware of the potential for misrepresentation, appropriation, and removal of context. It is important to attribute tweets with a speaker's handle or full name (for example, @handle:xxx). Retweeting and favoriting remove tweets from temporal sequence, so it is best to attribute individual tweets, rather than just the first in a sequence.

Sexual Harassment Policy

The SAA strives to be an inclusive and welcoming point of contact for our diverse membership of scholars, teachers, and students from around the world. We take instances of disrespectful, dismissive, patronizing, or harassing behavior—whether in speech or act, whether in formal or informal settings, and whether based on gender, sexuality, race, ethnicity, religious affiliation, ability, status, or age—seriously. Those who are the targets of harassment should not feel unheard or unassisted.

Definitions

Sexual harassment is behavior that demeans, humiliates, or threatens an individual on the basis of their sex. It is unwanted attention that a recipient experiences as offensive or disruptive to personal well-being. Sexual harassment can include crude behavior (such as offensive statements, jokes, or gestures); dismissive or insulting modes or address (such as referring to a woman not by her name but as “honey”); unwelcome sexual attention (such as unwanted touching or repeated requests for dates); and coercion.

Sex-based harassment also takes nonsexual forms when an individual is targeted because of gender or gender expression. It singles out some members of the community as acceptable targets and as unworthy of respect. Harassment never occurs in a vacuum. Frequently, alienating behaviors including race- and religion-based harassments intertwine with sexual harassment. Working to discern, for instance, whether a comment about appearance is aimed primarily at someone's gender, sexuality, religion, or race mistakes how harassment can leave its impact on multiple levels.



The SAA emphasizes the importance of adopting a fully intersectional understanding of sex-based harassment. Harassment not only sabotages the individual; it also damages the Shakespeare Association community by discouraging participation in the Association and compromising the free exchange of ideas that is at the center of our mission as an organization.

Respect

All of the spaces into which our professional meetings extend are professional, and the values of respect, equity, and nondiscrimination should inform conduct in the seminar room and on the dance floor, over coffee, and over drinks. All members should aspire to treat each member as having an equally valuable contribution to make.

What to Do if You Have Been Harassed

The SAA seeks to provide meaningful support to members who have experienced sexual harassment at the annual meeting or related events. If you have experienced any unwelcome behaviors, please contact the executive director or any trustee of the Association. These officially designated contacts can serve as sounding boards, confidantes, and informal advisers; they can also confer with you confidentially about possible next steps. Reporting an incident of sexual harassment does not obligate the reporter to pursue any further action. The SAA's goal above all is to support vulnerable members of the community and to strategize to end the harassment in question. As a voluntary professional organization with a small staff, the SAA is unfortunately limited in its ability to respond formally to charges of sexual harassment. Nonetheless, within these constraints the SAA will follow its professional and ethical responsibility to respond to reports of sexual harassment among its membership.

Academic Integrity

The Shakespeare Association of America thrives on the circulation of new and emerging ideas. The special atmosphere of its annual conference derives in part from its distinctive ways of bringing scholars of all ranks and many kinds of affiliation together for a free exchange of ideas. Unusual openness requires a high degree of academic trust. Given the circulation of work-in-progress that the conference fosters, it is important for all members to follow established citation and copyright guidelines in handling the intellectual property of others, including all abstracts, papers, and talks presented at the SAA.

Always obtain permission before citing unpublished work heard or read at the conference.

Never recirculate another's work in your own scholarship or teaching without the author's permission.

Treat seminar abstracts in the same way as papers read or circulated.

Follow the SAA's Social Media Guidelines for digital distribution, in real time or in retrospect, of the content of panels or seminars.

Hashtag: #Shax2019

sun,
red,
hearts are dunn:
on her head:
and white,
cheeks,
more delight



Shakespeare Association of America

Department of English
University of Mississippi
C-128 Bondurant Hall
P.O. Box 1848

University, MS 38677-1848

E-mail: shakespeare@olemiss.edu

Telephone: 662.915.2477

Facsimile: 662.915.5787

Website: www.shakespeareassociation.org



Shake